



Collegiate Water Polo Association

2017 Women's Guide

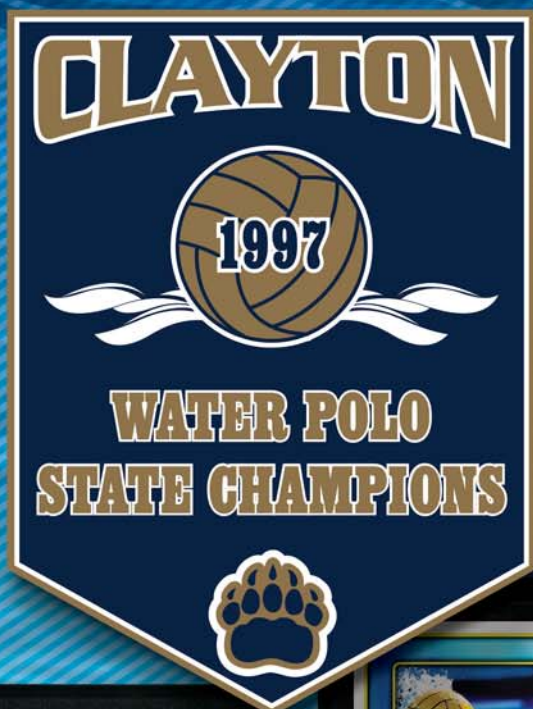
EXCLUSIVE PROVIDER OF AWARDS TO THE COLLEGIATE WATER POLO ASSOCIATION

Healy

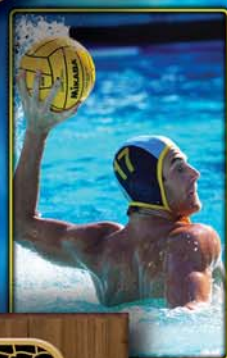
AWARDS • DECALS • APPAREL

SERVING YOUR TOTAL TEAM NEEDS

**HIGH QUALITY CUSTOMIZED AWARD
PRODUCTS FOR OVER 40 YEARS**



CLINTON COUGARS									
STRENGTH RECORDS									
BENCH			SQUAT			DEAD LIFT			
NAME	YEAR	RECORD	NAME	YEAR	RECORD	NAME	YEAR	RECORD	
ALL-TIME			ALL-TIME			ALL-TIME			
CURRENT YEAR			CURRENT YEAR			CURRENT YEAR			
POWER CLEAN			TOTAL						
NAME	YEAR	RECORD	NAME	YEAR	RECORD	NAME	YEAR	RECORD	
ALL-TIME			ALL-TIME			ALL-TIME			
CURRENT YEAR			CURRENT YEAR			CURRENT YEAR			



**WEST HIGH SCHOOL
WATER POLO**

Senior Award

#17 DAVID MILLER

FIRST TEAM ALL-CONFERENCE
FIRST TEAM ALL-STATE



QUALITY PRODUCTS, LOWEST PRICES, QUICK DELIVERY... THAT'S A HEALY GUARANTEE.

PHONE (800) 558-1696 ONLINE healyawards.com EMAIL sales@healyawards.com

UNDERSTANDING THE GAME OF WATER POLO

Water Polo can be a confusing game for spectators. The whistle is constantly blowing and the play never stops, even when someone is ejected for a penalty. In addition, there are many misconceptions about the game, including how the players keep their horses swimming. Well hang in there, because the following information should help to make the picture much clearer.

General Information

1. Each team has six field players and a goalie.
2. Field players can only use one hand to touch the ball, goalies two.
3. Games consist of 7-minute quarters for club divisions, 8-minute quarters for varsity divisions.
4. The object of the game is to score by placing the ball completely in the goal. Players may move the ball by swimming or passing.
5. Teams may substitute after a goal is scored, during a time-out or during the play from the ejection area.
6. Each team receives three time-outs and one 20-second time-out per game.
7. Shots blocked out of bounds by defensive players result in the defensive team receiving possession. If a defender uses two hands to block a shot, the offensive team receives a penalty shot.

2017 Women's Guide Table of Contents

About the CWPA	Pages 2-3
CWPA Timeline.....	Page 4
Competitive Format.....	Pages 6-7
Women's Championship Results.....	Pages 9-11
Women's Varsity Team Profiles.....	Pages 13-17
Women's Club Team Profiles	Pages 18-28
Women's Varsity Rosters	Pages 30-32
Women's Club Rosters	Pages 33-40

www.collegiatewaterpolo.org

Fouls

When an infraction of the rules occurs, the referee will point in the direction of the team taking possession, while blowing his whistle. The ball is put back into play with an action called a free throw. This means the player gets three seconds of free time to throw the ball to another teammate or swim it up the pool. A player cannot shoot a free throw unless outside the five-meter line. If the ball is not put into play within three seconds, the other team takes possession.

Fouls can be ordinary or major. Ordinary fouls are best understood as minor fouls. For example, a defender may reach over an opponent's back to get at the ball while facing away from the goal. The penalty for an ordinary foul is a free throw for the opposing team.

Major fouls are more severe and are penalized accordingly. For example, when a defender fouls an opponent too aggressively, or from behind when the opponent is facing the goal, the defender is ejected for 20 seconds (players may reenter the game if their team recovers the ball before the ejection time is up, or if the opposing team scores). When the foul occurs within five meters of the goal and the referee believes the player had a high chance of scoring, the opposition shoots a penalty shot. Major fouls can also occur through disrespect to the referee or when a player interferes with an opponent's free throw. Players may only receive three major fouls before elimination.

If all of this has you totally confused, just sit back and enjoy the game. The easiest way to follow the play is by watching the scoreboard. If your team is ahead at the end, great! If not, well consider that you have expanded your horizons. When the game is over, you can at least explain to your friends that the horses never get wet.



WATER POLO

HISTORY OF THE COLLEGIATE WATER POLO ASSOCIATION

The Collegiate Water Polo Association provides a number of benefits to its membership including:

Services Provided

Conference website
Desk official training and support
Championship tournament management
Hall of Fame Banquet
Hotel reservations for teams and officials
Job placement service
Online education
Referee assignments
Referee training program
Scheduling
Streaming kits

Equipment Provided

Free balls for all host sites
One free ball for every team
Score sheets for tournament hosts
Laminated scoring guide for tournament hosts
NCAA Rules Book and Fox 40 whistle for every team
Complimentary program for every club athlete and coach

Administration

The Collegiate Water Polo Association (CWPA) is a member of the National Collegiate Athletic Association (NCAA) and is comprised of collegiate institutions. The purpose of the Association is to serve its membership through a variety of ways, including the coordination of a competitive schedule. As a non-profit 501 (c)-3 organization, it is also a charitable entity, capable of receiving donations that are tax deductible. All gifts may be sent to the office, with an acknowledgment returned to you for your tax records.

Office Staff

Commissioner.....Daniel Sharadin
Email.....commissioner@collegiatewaterpolo.org

Assistant Commissioner.....Tom Tracey
Email.....tracey@collegiatewaterpolo.org

Director of Communications.....Ed Haas
Email.....haas@collegiatewaterpolo.org

Director of Membership Services.....Katie Wieber
Email.....membership@collegiatewaterpolo.org

Director of Multimedia.....Jon Weaver
Email.....video@collegiatewaterpolo.org

Coordinator of Officials.....Ed Reed
Email.....officials@collegiatewaterpolo.org

Awards Distributed

Awards for top two teams in each division
Awards for top coaches in each division
All-Tournament and MVP awards at championship events
Certificates for Scholar-Athletes
All-Conference awards for best 14 players per division
All-America awards for collegiate club teams

For more information about the Association, contact the office at:

Collegiate Water Polo Association
320 West 5th Street
Bridgeport, PA 19405
(610) 277-6787
(610) 277-7382 fax
office@collegiatewaterpolo.org
www.collegiatewaterpolo.org

CWPA Sportsmanship Statement

The CWPA and the NCAA promote good sportsmanship by student-athletes, coaches and spectators. We request your cooperation by supporting the participants and officials in a positive manner. Profanity, racial or sexist comments, or other intimidating actions directed at the officials, student-athletes, coaches, event personnel or team representatives will not be tolerated and are grounds for removal from the site of competition. Consumption or possession of alcoholic beverages and tobacco products within competition sites is prohibited.

Affiliate Organizations

There are many organizations affiliated with the sport of water polo and the landscape can be somewhat confusing when trying to sort out which entity offers what services. To make matters a little easier to understand, the organizations can be divided into two basic groups: scholastic and non scholastic. The scholastic organizations are those that have some affiliation with the educational system. These include college, high school, junior college and middle school teams, as well as their respective administrative bodies that offer competitive leagues and support. In this category one would find state sanctioning organizations, the National Collegiate Athletic Association (NCAA), the National Association for Intercollegiate Athletics (NAIA) and all the collegiate conferences recognized by the NCAA or NAIA. Each individual organization operates independently with its own governing structure.

The NCAA and the NAIA are two organizations that serve a unique position. They each provide a supervisory role for their member schools. The colleges and universities that are members of each respective organization choose to establish and follow a set of guidelines that govern competition. Specifically, these guidelines include eligibility, academic progress for their student-athletes, competitive rules, championship guidelines, recruiting and financial aid.

Schools that become members of one of these organizations agree to abide by the rules and principles established within the organization. The NCAA and NAIA provide oversight for the varsity teams on campus, not the collegiate clubs.

In addition to the NCAA and NAIA, there are conferences that operate for the purpose of arranging competition for their member institutions. Some conferences, like the Big East, Ivy League or Atlantic Coast Conference, handle multiple sports, while others like the CWPA handle a single sport. With respect to water polo, all clubs that are eligible for the National Collegiate Club Championship are members of the CWPA. To understand the difference between the league and the NCAA or NAIA, think of the conference on a smaller scale performing similar functions for its member institutions. The conference works with the national governing bodies (NCAA and NAIA) to help provide competitive opportunities and services, yet remains an independent organization with its own governing system and budget.

Non-scholastic organizations include all other entities that provide the opportunity for people to be involved in the sport outside of an educational institution. These include YMCAs, Boys & Girls Clubs, parks & recreation programs, privately organized clubs, township/city programs and independent organizations like American Water Polo. United States Water Polo fits under this category as well, serving as the National Governing Body for the sport. They are also responsible for supporting and training Olympic teams for men and women.

For more information about any specific organization, contact the CWPA office at 610-277-6787.

History of the CWPA

The Collegiate Water Polo Association originally began as the Mid Atlantic Conference, founded by Dick Russell in the 1970's. Its founding membership included teams from Maryland, Pennsylvania, New Jersey, and New York.

The conference relied on volunteer coaches until 1990, when it hired a commissioner to perform basic scheduling for the 15 member teams. Officiating assignments at the time were performed by an independent organization called the Eastern Water Polo Referees Association (EWPPA).

The next major milestone occurred in 1993, when the Southern and New England Conferences merged into the Mid Atlantic. The new structure combined all of the varsity teams in the East, along with the few sport clubs in existence at that time.

During the 1995 season, the conference received its first major challenge, as the organization experienced a strike by its officiating core. This strike ultimately resulted in the organization establishing its own officiating bureau, assuming responsibility for all of its officiating assignments. The conference hired Tere Ma as its inaugural Director of Officials and Loren Bertocci as its first Technical Director. These two individuals laid the groundwork for the Officiating Bureau that exists today.

The conference has grown over the years as well, with several key milestones marking the progress. In 2001, the women split into collegiate club and varsity competition for the first time as the CWPA expanded to over 200 teams. This rapid growth forced a move to larger office quarters in 2003, with the CWPA heading across the river to Bridgeport, Pennsylvania where it currently resides. In 2005 six women's teams were launched to help establish water polo as a conference sport in the Metro Atlantic Athletic Conference, giving these institutions an automatic bid to the NCAA Championship and helping the sport grow in new areas. In 2006 the Officiating Bureau took a leap forward with the establishment of a Technical Committee to oversee education, evaluation, and assignment of referees. Online education for referees was initiated at this same time allowing for greater access to all of our officials.

From a media standpoint, 2009 witnessed the launch of a new website and in 2010 we streamed games live for the first time with a one-camera set-up. In 2012 the conference made a large commitment to multimedia in both equipment and staff to better serve the membership. One outgrowth of this decision changed the live streaming of our championships to full-blown productions using three cameras, instant replay and a live announcer for play-by-play, similar in style to a television broadcast. It also provided the means to offer more competition streamed throughout the country, much more interactive content on the website, as well as increased online education.

Today the conference fields over 280 teams nationwide, with four full-time staff members, as well as interns in sports photography, multimedia, sports information, marketing and event management.

Over the past years, the Collegiate Water Polo Association has undergone dramatic changes:		2004	Women's varsity teams realign to form Northern, Southern, Northeastern and Western Divisions. Men's Florida Division teams merge into Southeast Division. Men's Great Plains Division splits forming Great Plains and Missouri Valley Divisions. Membership grows to 126 men's teams and 98 women's teams totaling 224.
1970's	The Mid-Atlantic Conference is founded by Dick Russell.		
1990	The conference hires a commissioner to manage the league administration.		
1993	The New England and Southern Conferences merge into the Mid-Atlantic. The conference changes its name to the Eastern Water Polo Association. Thirty-nine club and varsity teams participate.	2005	Six women's varsity teams amicably leave to join the Metro Atlantic Athletic Conference (MAAC) and receive an automatic bid to the NCAA Championship. Remaining teams realign to form Northern, Western and Southern Divisions. Women's Northeastern Division merges into the Northern Division. Women's Atlantic and North Atlantic Divisions added. Women's National Collegiate Club Championship expands to 16 teams. Membership grows to 131 men's and 99 women's teams totaling 230.
1994	The Association adds women's teams to its membership for 55 teams.		
1995	The conference ends its relationship with the Eastern Water Polo Referees Association and establishes its own officiating bureau. Tere Ma hired as the inaugural Director of Officials and Loren Bertocci hired as the first Technical Director. Men's Midwest Division is added. Club championships are separated by division. Membership increases to 82 teams.	2006	Women's Atlantic and Mid-Atlantic Divisions merge Division. Men's Ohio Valley Division members join Great Lakes and Missouri Valley Divisions. CWPA varsity teams create a Technical Committee to lead the education, evaluation and assignment of referees. Membership grows to 138 men's and 96 women's teams totaling 234.
1996	Women's Midwest and Men's Southwest Divisions are added. The Eastern Water Polo Association changes its name to the Collegiate Water Polo Association to reflect the geographic representation of its membership. Membership rises to 95 teams.	2007	Pacific Coast Women's Division splits forming Sierra Pacific Division. Women's Great Lakes Division splits forming Ohio Valley Division. Men's Southwest Division splits forming Rocky Mountain Division. Men's Southeast Division splits to re-establish the Florida Division. CWPA initiates online education program for referees. Membership grows to 141 men's and 101 women's teams totaling 242.
1997	Women's Southwest Division is added. Women's Northern Division splits into New York and New England Divisions. Great Lakes Division is added. Men's New England Division splits to North Atlantic and New England Divisions. Membership reaches 110 teams.		
1998	Men's and Women's Northwest Divisions added. Men's Pacific Coast Division added. Membership includes 40 women's teams and 97 men's teams totaling 137.	2008	Membership grows to 143 men's and 100 women's teams totaling 243.
1999	Women's Pacific Coast Division and Men's Great Plains Division added. Women's Midwest Division reinstated. Men's Great Lakes Division changes name to Heartland Division. Membership increases to 52 women's teams and 107 men's teams totaling 159.	2009	Big Ten Division club teams join the CWPA. CWPA Women's Division III Varsity Championship created. CWPA begins streaming championship games on-line. Membership grows to 161 men's and 98 women's teams totaling 259.
2000	Men's Southeast and Atlantic Divisions added. Membership increases to 54 women's teams and 121 men's teams totaling 175.	2010	Membership grows to 160 men's and 117 women's teams totaling 277.
2001	Women's varsity and club programs separate competitively. Women's varsity teams form Northern and Southern Divisions. Women's Southeast Division added. Men's and Women's Texas Divisions added. Membership increases to 122 men's teams and 80 women's teams totaling 202.	2011	Women's Southwest Division splits to form Rocky Mountain Division. Men's Southwest and Rocky Mountain Divisions merge. Men's Sierra Pacific Division formed with teams from the Pacific Coast Division. Membership grows to 156 men's and 126 women's teams totaling 282.
2002	Men's Florida and Great Lakes Divisions added. Men's Midwest Division renamed the Ohio Valley Division. Membership increases to 124 men's teams and 91 women's teams totaling 215.	2012	Membership steadies at 159 men's and 121 women's teams totaling 280.
2003	Men's Division II Eastern Championship established. League office moves to Bridgeport, Pennsylvania after 13 years in Norristown, Pennsylvania. Membership steadies at 120 men's and 95 women's teams totaling 215 teams.	2013	Membership changes to 158 men's and 115 women's teams totaling 273.
		2014	Membership rebounds to 167 men's and 116 women's teams totaling 283.
		2015	Several women's divisions realign with the merger of the Great Plains and Midwest and the re-establishment of the Rocky Mountain and Atlantic Divisions. Total men's teams grow to 169 and women's membership falls to 112 totaling 281.

LOOKING FOR A WAY TO STAY INVOLVED WITH WATER POLO AFTER YOUR COLLEGE CAREER?

Why not consider becoming a water polo official!



You can start training now at no cost to you!



**Collegiate
Water Polo
Association**

Learn how by going to the CWPA Website or contacting:

Ed Reed

CWPA Coordinator of Officials

League Office: 610-277-6787

Email: officials@collegiatewaterpolo.org

www.collegiatewaterpolo.org

COMPETITIVE FORMAT

The Collegiate Water Polo Association (CWPA) is divided into two classes, varsity and sport club. Each class of membership is then divided into divisions based on geography.

Division I & II Varsity Class

Teams play a single round robin format, with everyone attending the championship. The first place team at the CWPA Championship qualifies for the play-in game for the NCAA National Championship.

Division III Varsity Class

Teams play a double round robin format with all teams attending the championship. The team that wins the Division III Championship moves on to the CWPA Championship.

Sport Club Class

Teams are divided into 15-divisions based on geography. The top team from each division championship and the host institution qualifies for the 16-team National Collegiate Club Championship.

Atlantic Division

Teams play a triple round robin format during the regular season with all teams attending the championship. Championship seeding is based on the regular season won/loss records.

Big Ten Division

Teams play a single round robin schedule over two weekends with additional seeding games drawn at random. All teams attend the championship tournament, with seeding based on the regular season won/loss records.

Heartland Division

Teams play four games within their region, followed by a crossover event where they compete in four games against the opposite region. All teams attend the championship tournament, with seeding based on the regular season won/loss records.

Mid-Atlantic Division

Teams play a single round robin schedule over two weekends with additional seeding games drawn at random. All teams attend the championship tournament, with seeding based on the regular season won/loss records.

Midwest Division

Teams play four opponents drawn at random during one regional weekend. All teams attend the championship tournament, with seeding based on the regular season won/loss records.

New England Division

Teams play a single round robin schedule over two weekends with additional seeding games drawn at random. All teams attend the championship tournament, with seeding based on the regular season won/loss records.

New York Division

Teams play a double round robin schedule over two weekends. All teams attend the championship tournament, with seeding based on the regular season won/loss records.

North Atlantic Division

Teams play four games within their region, followed by a crossover event where they compete in four games against the opposite region. All teams attend the championship tournament, with seeding based on the regular season won/loss records.

Northwest Division

Teams play a single round robin schedule over two weekends with additional seeding games drawn at random. All teams attend the championship tournament, with seeding based on the regular season won/loss records.

Pacific Coast Division

Teams play a double round robin schedule over two weekends. All teams attend the championship tournament, with seeding based on the regular season won/loss records.

Rocky Mountain Division

Teams play a triple round robin format during the regular season with all teams attending the championship. Championship seeding is based on the regular season won/loss records.

Sierra Pacific Division

Teams play a single round robin schedule over two weekends. All teams attend the championship tournament, with seeding based on the regular season won/loss records.

Southeast Division

Teams play a single round robin schedule over two weekends with an additional seeding game drawn at random. All teams attend the championship tournament, with seeding based on the regular season won/loss records.

Southwest Division

Teams play a double round robin schedule over two weekends. All teams attend the championship tournament, with seeding based on the regular season won/loss records.

Texas Division

Teams play a single round robin schedule over two weekends with additional seeding games drawn at random. All teams attend the championship tournament, with seeding based on the regular season won/loss records.

Tie Breaker System - All Situations

If two teams are tied using the tie breaker system below and they have played each other, the head-to-head competition is used to determine ranking. Note, in the event that a team forfeited a game during the season, that team is eliminated from tie-breaker consideration and is seeded at the lowest position among the tied teams.

Tie Breaker System - Two Teams

If the won/loss records of two teams are the same, the team that won in their head-to-head competition is the higher seed. If these teams each beat one another, the goal differential in their games is used to break the tie. If the goal differential in their contests against one another is the same, the total of goals scored against each other is used. If the total of goals scored between the teams is equal, the differential for all common opponents seeded higher is used. If no common opponents are seeded higher, the goal differential against the highest seeded common opponent is used.

Tie Breaker System - Three or More Teams (for seeding championships)

If more than two teams are tied in won/loss records, goal differentials among the teams tied serves as the tiebreaker to determine the best team within the group until only two teams remain. The final two teams use their head-to-head results to break the tie. If the top two teams based on goal differentials are tied, the tie is broken with the results of their head-to-head competition.

If the goal differential among all teams tied is the same, the total of goals scored against each other is used. If the total of goals scored between the teams is equal, the goal differential between common opponents seeded higher will be used to determine ranking. This may require averaging the goal differential per game if the number of games between common opponents is unequal. Should teams be tied in won/loss record and they have not played each other, goal differentials against common opponents that are seeded above them are used. If no common opponents are seeded higher, the goal differential against the highest seeded common opponent is used.

Tie Breaker System - Three or More Teams (for advancement w/in championships)

If all tiebreakers remain equal, their original seeding will serve as the tiebreaker.

Goal Differential

Goal differential is a term used to describe the difference between goals scored against an opponent and the number of goals scored by an opponent against a particular team.

WE BRING THE GAME TO YOU!

DO NOT MISS A SHOT, STEAL OR SAVE

**LIVE MULTI-CAMERA VIDEO STREAMS OF
CHAMPIONSHIPS & SELECT GAMES**



**Collegiate
Water Polo
Association**

www.collegiatewaterpolo.org/Multimedia

**Questions?
Contact the Collegiate Water Polo Association
at
610-277-6787
office@collegiatewaterpolo.org**

COLLEGIATE WATER POLO ASSOCIATION CHAMPIONSHIP RESULTS

Women's Varsity Competition

Champion	Runner-Up
----------	-----------

CWPA Championship

1988	Slippery Rock University	Bucknell University
1989	Slippery Rock University	Bucknell University
1990	Slippery Rock University	Harvard University
1991	Slippery Rock University	Bucknell University
1992	Slippery Rock University	University of Maryland
1993	Slippery Rock University	Harvard University
1994	Slippery Rock University	Bucknell University
1995	Slippery Rock University	Harvard University
1996	Slippery Rock University	University of Maryland
1997	University of Maryland	Slippery Rock University
1998	University of Massachusetts	University of Maryland
1999	University of Massachusetts	University of Maryland
2000	Princeton University	University of Massachusetts
2001	Brown University	Princeton University
2002	University of Michigan	Hartwick College
2003	Indiana University	Brown University
2004	Hartwick College	University of Michigan
2005	University of Michigan	Indiana University
2006	Hartwick College	University of Michigan
2007	Hartwick College	Princeton University
2008	University of Michigan	Hartwick College
2009	University of Michigan	Hartwick College
2010	University of Michigan	Indiana University
2011	Indiana University	University of Michigan
2012	Princeton University	University of Maryland
2013	Princeton University	University of Michigan
2014	Indiana University	Princeton University
2015	Princeton University	Indiana University
2016	University of Michigan	Indiana University

CWPA Division III Championship

2010	Grove City College	Carthage College
2011	Grove City College	Wash. & Jefferson College
2012	Grove City College	Wash. & Jefferson College
2013	Connecticut College	Grove City College
2014	Connecticut College	Wash. & Jefferson College
2015	Connecticut College	Wash. & Jefferson College
2016	Connecticut College	Wash. & Jefferson College

"Elite" Championship

2010	University of Michigan	Hartwick College
------	------------------------	------------------

ECAC Championship

2000	Princeton University	University of Massachusetts
2001	Princeton University	Brown University
2002	Hartwick College	Brown University
2003	Princeton University	Hartwick College
2004	Hartwick College	Brown University
2005	Princeton University	Hartwick College
2006	Princeton University	Bucknell University
2007	Princeton University	Brown University
2008	Bucknell University	Marist College
2009	Brown University	Marist College
2010	Brown University	Princeton University
2011	University of Maryland	Iona College

Women's Sport Club Competition

Atlantic Division

2005	James Madison University	University of Virginia
2015	Duke University	University of Virginia
2016	University of Virginia	Virginia Tech

Big Ten Division

2010	University of Michigan	Michigan State University
2011	University of Michigan	University of Illinois
2012	University of Michigan	University of Illinois
2013	University of Michigan	University of Illinois
2014	University of Michigan	Michigan State University
2015	University of Michigan	Michigan State University
2016	University of Michigan	Michigan State University

Great Plains Division

2014	Lindenwood University	Illinois State University
------	-----------------------	---------------------------

Heartland Division

1999	Macalester College	University of Minnesota
2000	No competition	
2001	Macalester College	Carleton College
2002	Carleton College	Macalester College
2003	Macalester College	Carleton College
2004	Macalester College	Wheaton College
2005	Wheaton College	Macalester College
2006	Carleton College	Grinnell College
2007	Lindenwood University	Iowa State University
2008	Lindenwood University	Carleton College
2009	Carleton College	Lindenwood University
2010	Illinois State University	Iowa State University
2011	Lindenwood University	Carleton College
2012	Lindenwood University	University of Minnesota
2013	Lindenwood University	Illinois State University

2014	Washington University (Mo.)	Grinnell College	2014	Dartmouth College	Middlebury College
2015	Washington University (Mo.)	Knox College	2015	Dartmouth College	Middlebury College
2016	Washington University (Mo.)	Knox College	2016	Middlebury College	Boston University

Mid-Atlantic Division

2001	Pennsylvania State University	University of Maryland
2002	University of Maryland	Pennsylvania State University
2003	University of Virginia	University of Pennsylvania
2004	University of Pennsylvania	University of Virginia
2005	Pennsylvania State University	West Chester University
2006	University of Pennsylvania	University of Pittsburgh
2007	University of Pennsylvania	University of Pittsburgh
2008	University of Pennsylvania	Duke University
2009	University of Pennsylvania	University of Virginia
2010	University of Pennsylvania	Pennsylvania State University
2011	Pennsylvania State University	University of Pennsylvania
2012	Duke University	University of Pennsylvania
2013	Duke University	Pennsylvania State University
2014	Duke University	Pennsylvania State University
2015	Pennsylvania State University	University of Pittsburgh
2016	University of Pittsburgh	Pennsylvania State University

Midwest Division

1996	Miami University (Ohio)	Bowling Green University
1997	Miami University (Ohio)	University of Notre Dame
1998	No Competition	
1999	University of Notre Dame	Miami University (Ohio)
2000	Miami University (Ohio)	University of Notre Dame
2001	University of Notre Dame	Miami University (Ohio)
2002	University of Notre Dame	Miami University (Ohio)
2003	Miami University (Ohio)	University of Notre Dame
2004	Miami University (Ohio)	University of Notre Dame
2005	Miami University (Ohio)	University of Notre Dame
2006	Miami University (Ohio)	University of Notre Dame
2007	University of Notre Dame	Grand Valley State University
2008	University of Notre Dame	Grand Valley State University
2009	University of Notre Dame	Grand Valley State University
2010	University of Notre Dame	Grand Valley State University
2011	University of Notre Dame	Miami University (Ohio)
2012	University of Notre Dame	Grand Valley State University
2013	University of Notre Dame	Grand Valley State University
2014	University of Notre Dame	Grand Valley State University
2015	University of Notre Dame	Lindenwood University
2016	Grand Valley State University	University of Notre Dame

New England Division

2001	Yale University	MIT
2002	Dartmouth College	MIT
2003	Dartmouth College	Yale University
2004	Dartmouth College	Yale University
2005	Dartmouth College	Yale University
2006	Yale University	Middlebury College
2007	Dartmouth College	Middlebury College
2008	Middlebury College	Dartmouth College
2009	Dartmouth College	Boston University
2010	Boston College	Dartmouth College
2011	Dartmouth College	Boston College
2012	Dartmouth College	Williams College
2013	Middlebury College	Dartmouth College

New York Division

2001	Columbia University	Colgate University
2002	New York University	Columbia University
2003	Columbia University	Colgate University
2004	New York University	Cornell University
2005	Cornell University	Colgate University
2006	Cornell University	Colgate University
2007	Columbia University	Cornell University
2008	New York University	Syracuse University
2009	New York University	Columbia University
2010	New York University	Colgate University
2011	Cornell University	Columbia University
2012	Cornell University	Syracuse University
2013	Columbia University	Syracuse University
2014	New York University	Colgate University
2015	New York University	Cornell University
2016	New York University	Colgate University

North Atlantic Division

2005	MIT	Boston University
2006	MIT	Boston University
2007	MIT	Boston College
2008	Boston College	MIT
2009	Boston College	MIT
2010	Middlebury College	MIT
2011	Middlebury College	Bates College
2012	Bowdoin College	Wellesley College
2013	Yale University	Boston University
2014	Bowdoin College	Boston University
2015	Boston University	Bowdoin College
2016	Yale University	Wellesley College

Northwest Division

1998	University of Washington	Simon Fraser University
1999	University of Washington	Simon Fraser University
2000	University of Washington	Oregon State University
2001	University of Washington	University of Oregon
2002	University of Oregon	University of Washington
2003	University of Washington	Simon Fraser University
2004	Simon Fraser University	University of Washington
2005	University of Oregon	University of Washington
2006	University of Oregon	University of Washington
2007	University of Oregon	University of Washington
2008	University of Oregon	University of Washington
2009	University of Oregon	University of Washington
2010	University of Oregon	Oregon State University
2011	University of Oregon	Oregon State University
2012	University of Oregon	Oregon State University
2013	Portland State University	University of Oregon
2014	University of Oregon	Portland State University
2015	University of Oregon	Portland State University
2016	University of Washington	University of Oregon

Ohio Valley Division

2007	Miami University (Ohio)	Ohio University
------	-------------------------	-----------------

Pacific Coast Division

1999	Cal Poly State University	Cal State University-Chico	2000	University of Arizona	Northern Arizona University
2000	Cal Poly State University	Cal State University-Chico	2001	University of Arizona	Northern Arizona University
2001	UCLA	University of Utah	2002	University of Utah	U. S. Air Force Academy
2002	Cal Poly State University	UCLA	2003	University of Colorado	University of Utah
2003	Cal Poly State University	UC-Davis	2004	University of Utah	University of Arizona
2004	USC	UCLA	2005	U. S. Air Force Academy	University of Utah
2005	Cal Poly State University	Fresno State University	2006	University of Utah	U. S. Air Force Academy
2006	Cal Poly State University	Fresno State University	2007	University of Arizona	University of Utah
2007	Cal Poly State University	UCLA	2008	University of Arizona	University of Colorado
2008	Cal Poly State University	UCLA	2009	University of Arizona	U. S. Air Force Academy
2009	Cal Poly State University	UCLA	2010	University of Utah	University of Colorado
2010	Cal Poly State University	UCLA	2011	Arizona State University	University of Arizona
2011	Cal Poly State University	UCLA	2012	Arizona State University	University of Arizona
2012	Cal Poly State University	San Diego State University	2013	University of Arizona	Arizona State University
2013	Cal Poly State University	UC-Santa Barbara	2014	Arizona State University	University of Arizona
2014	San Diego State University	Cal Poly State University	2015	San Diego State University	UC-Irvine
2015	UC-Santa Barbara	Cal Poly State University	2016	San Diego State University	UC-San Diego
2016	UC-Santa Barbara	Cal Poly State University			

Rocky Mountain Division

2011	University of Utah "A"	University of Utah "B"
2015	University of Utah	University of Colorado
2016	University of Utah	University of Colorado

Sierra Pacific Division

2007	Fresno State University	UC-Davis
2008	UC-Davis	Cal State University-Chico
2009	UC-Davis	Cal State University-Chico
2010	UC-Santa Cruz	UC-Davis
2011	UC-Davis	UC-Berkeley
2012	UC-Santa Cruz	UC-Davis
2013	UC-Davis	UC-Berkeley
2014	UC-Davis	UC-Berkeley
2015	UC-Berkeley	UC-Davis
2016	UC-Davis	UC-Berkeley

Southeast Division

2001	University of Florida	Emory University
2002	University of Florida	Emory University
2003	University of Florida	Emory University
2004	University of Florida	Florida State University
2005	University of Florida	Florida State University
2006	University of Florida	University of Central Florida
2007	University of Florida	University of Central Florida
2008	University of Florida	Florida State University
2009	University of Central Florida	University of Florida
2010	University of Central Florida	University of Florida
2011	University of Florida	University of Central Florida
2012	University of Florida	University of Central Florida
2013	University of Central Florida	University of Florida
2014	University of Florida	University of Central Florida
2015	University of Central Florida	Florida State University
2016	University of Florida	University of Central Florida

Southwest Division

1997	University of Colorado	University of Texas
1998	University of Arizona	University of Colorado
1999	Northern Arizona University	University of Arizona

Texas Division

2001	Texas A&M University	University of Texas
2002	University of Texas	Texas A&M University
2003	Rice University	Texas A&M University
2004	Rice University	Trinity University
2005	Rice University	Baylor University
2006	Rice University	Texas A&M University
2007	University of Texas	Texas A&M University
2008	Texas A&M University	University of Texas
2009	University of Texas	Texas A&M University
2010	Texas A&M University	University of Texas
2011	University of Texas	Texas A&M University
2012	University of Texas	Texas State University
2013	Texas A&M University	University of Texas
2014	Texas A&M University	University of Texas
2015	Texas A&M University	Texas State University
2016	University of Texas	Texas A&M University

National Collegiate Club Championship

2000	University of Washington	Michigan State University
2001	Michigan State University	University of Florida
2002	Michigan State University	Cal Poly State University
2003	Cal Poly State University	Michigan State University
2004	Cal Poly State University	Dartmouth College
2005	Cal Poly State University	Dartmouth College
2006	Michigan State University	University of Florida
2007	Fresno State University	Cal Poly State University
2008	Cal Poly State University	University of Oregon
2009	Cal Poly State University	University of Notre Dame
2010	Cal Poly State University	University of Michigan
2011	Cal Poly State University	UC-Davis
2012	UC-Davis	Cal Poly State University
2013	UC-Davis	University of Central Florida
2014	San Diego State University	University of Michigan
2015	UC-Berkeley	University of Notre Dame
2016	UC-Santa Barbara	University of Michigan

CWPA/NAIA National Invitational

2008	California Baptist University	Concordia University
------	-------------------------------	----------------------



www.kap7waterpolo.com

www.turbo.us



CUSTOM TEAM PRODUCTS

NEW WP Tecno

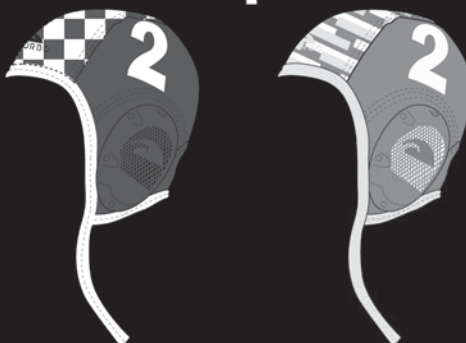


Men's Polo



Caps

Robes



Team Apparel



National - Brad Schumacher (949) 874-2265
National - Trish Robertson (925) 876-5373
National - Alex Young (949) 727-3535

brad@kap7inc.com
kgrventures@gmail.com
alex@kap7inc.com

CWPA VARSITY TEAM PROFILES

DIVISION I & II

Brown University

Following a Seventh Place finish at the 2016 Collegiate Water Polo Association (CWPA) Championship hosted by Harvard University, the Bears of Brown University will turn to a mix of returning talent - especially a large sophomore class - and some newcomers to turn the tables. The team will aim for its sixth 20-win season under 10th-year head coach Felix Mercado after the Bears went 11-25 a year ago. Leading the charge will be seniors Maria Kolokotronis, Anne Warner, Jourdan Meltzer, Sahana Nazeer, Shannon Crowley, Ellyn Vitek and Catherine Roach. In the field, Hannah Eliot, Maigrie McDougal, Carmen Rosas, Andrey Flower and Hailey Jacobson should provide additional offense in support of goalie Marisol Dakan.

Bucknell University

Last year, the Bucknell women's water polo team posted its most victories since 2009 and its fifth-place finish at the CWPA Championship marked the best for the program at the prestigious event since 2010. The Bison have increased their win total each of the last three years and hope to continue that upward trend this Spring. This year's team will have a different look to it, though. The top two scorers from last year's squad - Eleanor Marrs and Hannah Sunday - graduated. This year's team is dominated by underclassmen with 12 of the 19 players on the roster members of the freshman and sophomore classes. "It took a few years to get to where we were last year," explained sixth-year Bucknell head coach John McBride. "Hopefully the younger players will now step up and carry on the momentum, but you never know from year-to-year. We did lose some key components of our team and it will be interesting to see how some of our younger players fill those roles." To combat some of the youth this year's team possesses, McBride took the squad on a weeklong preseason training trip to Barbados in January. While the players did have some relaxing time in the sun, they were also put through daily workouts and had the chance to spend plenty of time getting to know each other. "The trip to Barbados was about team morale, getting everyone together and encouraging them to get along and communicate," noted McBride, who ranks second on the program's career wins list with 68 victories. "It seemed to go really well. They all seemed to get along and form that bond that will take us through the long season." Junior Shyla Lintz and senior Tegan Stanbach were named captains during the preseason and those veterans will use their experience to help guide the young Bison squad. "Our captains provide experience, are hard workers and they really care about the success of the team," praised McBride, who is also the head coach of Bucknell's men's water polo team that advanced to NCAAAs in the fall. "They tasted success last year and they provide a good example to their younger teammates about hard work and commitment." Sunday, who is now in her first year as an assistant coach with the Bison, was an all-conference center and she graduated as the No. 6 goal scorer in program history. McBride's offense has always heavily featured the center position, and that should continue this spring with Lintz and freshman Katie Nedrow splitting time at that spot. Lintz shared time with Sunday the last two years and has scored 36 career goals and drawn 52 ejections in a reserve role. "Shyla is the go-to for the center position, but Katie is strong and tough," explained McBride. "She will contribute a lot, likely more towards the end of

the season than the beginning." While the Bison will continue to be a center-focused offense, McBride is excited about the speed of the team. "We have a lot of really fast swimmers who can shoot the ball, so we are going to be a lot more mobile than in past years," noted McBride. "We will be a little less structured so we can utilize our speed." As it was last year when eight different players reached double-figures in goals, Bucknell's offense should also be balanced. "Most of our production should come from the outside," predicted McBride. "We need to make sure our field players are shooting the ball well and taking advantage of opportunities so it will open enough space to get the ball to our centers." Stanbach is a two-year starter who has played in 88 games over the past three years. She enters her final year with 45 goals, 24 assists, 87 steals and 22 ejections drawn in her career. Stanbach is coming off a year in which she totaled a career-high 29 goals to rank fifth on the team. "Tegan is going to be a big part of our offense this year," said McBride. "I expect her to score a lot more goals and she is still really solid as a defender in the middle." Sophomore Sarah Mooney will form a solid combo with Stanbach and provide another strong center defender on the roster. Mooney scored six goals and had 10 steals as a rookie in 2016. Juniors Colleen Barron and Marta Considine were among the team leaders in goals last year, and McBride expects their production to only increase as they take on more prominent roles this season. Barron is the team's top returning goal scorer with 37 last year, while Considine ranked sixth on the squad with 27 goals a year ago. Sophomore Emily Konishi made a strong impact as a rookie last year and her role will only expand this year. She finished fourth on the team in goals (36), second in assists (35) and third in points (71) while starting all but one game. "Emily is our quarterback and decision-maker when she has the ball," commented McBride. "She plays great defense, but her responsibility on offense is to dish the ball and spread it around to our other players." Sophomore Chelsea Scuderi, who saw limited playing time last year, is expected to move into a starting role this year, while freshmen Nina Benson, Gigi Rojahn and Matylda Zaklicki will add depth. Junior Manuela Herrera split time with senior Haley Derrod in goal last year and is expected to be the primary starter heading into the season. Herrera posted a team-high 113 saves and led the squad in save percentage last year while starting a team-high 20 games. Derrod registered 87 saves and made 13 starts. New to the goalie mix this year is freshman Haley Pogue. The freshman from San Diego, California, will provide valuable depth at the position. Also providing depth in the field will be senior Julia Ulrich, sophomores Eliza Romeyn and Regina Younger, and freshmen Arianne Evans and Savannah Weaver.

George Washington University

Following back-to-back Eighth Place finishes at the Collegiate Water Polo Association (CWPA) Championship in both 2015 and 2016, the Colonials of George Washington University return for another shot at capturing the program's inaugural league title. Led by third-year head coach Adam Foley, GW will rely on the offensive output of Allyson Bakos, Maddie Goodell, Erin McGeoy, Jacqueline Bywater, Scarlett Hallahan and Maggie Ball to overpower its foes. They will be joined by freshmen Ally Jochim and Kira Bruno as the Colonials' will be an offensive threat every time down the tank. In cage, Katherine Moeller returns to serve as the primary netminder with freshmen Samantha Runyon and Geena Peyton seeing time as the season progresses.

Hartwick College

Hartwick College brings back 12 returning players from last season's team which went 16-14 and finished in Fourth Place at the Collegiate Water Polo Association (CWPA) Championship. The Hawks also boast 11 newcomers, which is the largest freshmen class Hartwick head coach Alan Huckins has had in his fourteen seasons with the program. Huckins brings back seven of his top eight scorers from last season, which includes the quartet of Zsafia Polak, Katie McKenty, Nikolina Mihajlovik and Lauren Brennan. Polak was an honorable mention All-America selection last season after registering 112 goals and 168 points. Her 3.86 goals per game average is the best of any player in Hartwick history and her 168 points is the second-most in program history. McKenty tied Polak for the most assists on the team with 56. She added 34 goals for 90 points and contributed 36 steals, which ranked fourth on the squad. Mihajlovic was the Hawks' second-leading scorer with 72 tallies last season. She now has 148 goals in her two seasons with the Hawks. Brennan stepped up her offensive output from her freshman to sophomore year. After recording 18 goals her first season with 'Wick, she found the net 52 times to go along with 26 assists. Brennan also collected 47 steals to rank third on the team. Also returning for the Hawks are junior Charlotte Cottle and sophomores Maria Moya and L.J. Edwards. Cottle and Moya combined for 24 goals, 75 assists and 82 steals last season. Edwards ranked sixth on the team with 32 tallies. Natalie May, Sarah Lewis and Kristy Walker round out the returning corps of field players for the Hawks. Junior Josette Santos and sophomore Sabrina Hartwell are the Hawks' two returning goalkeepers. Santos played in 15 games making 92 saves in 2016. Hartwell stopped 14 shots in six outings. The freshmen class possesses a great deal of talent and promise. It also gives the Hawks something they've lacked in recent seasons – depth. "We've had some big classes before," Huckins stated. "Nine or ten here and there but this is the biggest class we've had. With this class, we become a much deeper team. I'm hoping to go 14 deep." A pair of international players, Lena Kotanchyan and Tori Wilson, will be two newcomers to make an immediate impact. "Lena has a great all-around game," said Huckins. "She's is fast, smart, and a great shooter. She's legit. Tori is a big, strong center. She can get up and down the pool and is going to be a presence at two meters." Becca Lelles, Maryanna Antoniou and Emma Aleksandrovic will also see action this season. "Becca has been playing very well, starting a few games for us in the Fall," Huckins added. "She's fast and getting better every day. Maryanna is a fourth center but will play in other places. She'll contribute right away. Emma could be very good in goal. She will challenge our returning goalies this season." Hannah Erbe Smith, Madison Germuska and Gina Grauer also are expected to contribute and log significant minutes this season. Bolstering the lineup this season will be newcomers Edra Colbeck, Hayley Hill and Ashley Madrigal-Geary.

Harvard University

Harvard University enjoyed one of its most successful seasons in program history, finishing the year at 24-10. The Crimson checked in at No. 13 in the Collegiate Water Polo Association (CWPA) rankings from March 23 – April 6, marking its highest ranking ever, while also recording back-to-back 20-win seasons for the first time in program history. The Crimson notched nine wins against top-25 teams last season. However, Harvard hopes to reach new heights for the 2017 season after notching its second consecutive Sixth Place finish at the CWPA Championship tournament. Led by head coach Ted Minnis and captains/seniors Michelle Martinelli and Zoe Osborne, the Crimson have high expectations to move up in the final league rankings and punch the program's ticket to the National Collegiate Athletic Association (NCAA) Championship. Junior Cleo Harrington and sophomore Kristen Hong showed their potential a year ago. Harrington was named to the 2016 Division I Association of Collegiate Water Polo Coaches (ACWPC) All-America Honorable Mention team as she broke the program single-season saves record with 308 stops to go along with 25 assists and 18 steals. She posted 15 double-digit save performances and was selected to the CWPA Division I All-Conference and All-Tournament First Teams. Hong registered 80 goals in her freshman campaign, matching the single-season Harvard record. Hong tallied 21 multi-goal efforts and collected a team-high 45 steals, while ranking third in assists with 35. The Orinda, California native set the record for CWPA Division I/Rookie of the Week honors with five last season. Five freshmen join the Crimson roster this season as the Class of 2020. Angie Varona, Mathilde Ribordy, Julie Harrison, Lana Gorlinski and Sofia Carreira-Justiz look to bolster a Harvard roster that features nine other players, including five upperclassmen.

Indiana University

A lot has happened for Indiana University's water polo team since last season. The Hoosiers began the year with the appointment of new head coach Ryan Castle, who steps into his first collegiate head coaching position after several years as an assistant at numerous top-20 programs. Castle, alongside new assistant coach Emily Carr, has put in the work since the start of the academic year with the hope of making a smooth transition to his way of playing. With Castle came a massive personnel shift in the pool. The Hoosiers bring nine new players into the fold this season, including eight freshmen, one semester transfer, and the highly anticipated return of goalkeeper Jessica Gaudreault. After two illustrious seasons with a pair of All-Collegiate Water Polo Association (CWPA) First Team honors and a CWPA title in 2014, Gaudreault headed north to train full-time with the Canadian Women's National Team as they prepared to qualify for the 2016 Summer Olympics. Gaudreault is back for her junior season, this time with two years of playing at the sport's highest level under her cap. "The good thing is that we have a lot of new players on the team," Gaudreault said regarding Indiana's offseason transition. "We have seven freshmen, a transfer, and I came back after two years. We have nine people coming in total who will be new to this team. That gives everything a refreshing feel." Just three of the eight newcomers arrived over the summer alongside Gaudreault: Megan Abarta, Kendall Doten and Gillian Gatecliff. The trio of field players have made an instant impact on the practice tempo and competition, two factors that doubled up at the semester break. Emily Powell and Mollie Williams became Castle's first two signees and IU's only current players from Australia. Joelle Nacouzi, who committed last spring but joined at semester, is a familiar face to junior international teammates Sarah Myers and returning All-American Kelly Matthews. Davis Simmons made the trip from Mercer Island, Washington with coach Carr to bolster the

goalkeeping unit, and Riley Beemer transferred from Golden West Community College to join IU as a sophomore. "Competitiveness," Gaudreault said, the one word she used to describe the new group. "It's become much more competitive in the water with the team, and that's how we're going to get better in the long run." Although the Hoosiers lost crucial players like Mary Campbell, MacKenzie Bonk and Candyce Schroeder to graduation, they return four-of-seven starters from last year's team. Matthews, IU's leading scorer with 73 goals in each of her first two seasons, will lead the attack alongside playmaker and international counterpart Sarah Myers. Karrie Kozokar and Jennifer Beadle, who became regular starters last season, combined for 75 goals, 44 assists, and 77 steals in 2016. Sarah Young, who made a crucial transition from center to a face-up position on the perimeter, broke out with 26 goals and 35 assists last year.

Princeton University

The Princeton University women's water polo squad returns four of its top seven scorers from last year's team that went finished in Third Place at the Collegiate Water Polo Association (CWPA) Championship. Two members that will be back in the fold are Association of Collegiate Water Polo Coaches (ACWPC) Honorable Mention All-America selections Lindsey Kelleher and Haley Wan. Kelleher led the team with 41 assists and finished second in goals (48) and drawn ejections (25). Wan was one of just 15 players in program history to score at least 50 goals (58) on a team-high 94 shots. She was first in steals (40), tied for first in blocks (seven), second in assists (37) and sprint wins (16). Oh, Ashleigh Johnson is back in the mix too after a one-year absence. What did she do in her time off? The Miami, Fla., native helped the U.S. Olympic team win its second consecutive gold medal at the 2016 Rio Summer Olympics. In six games in Rio, she allowed just 28 goals, made 48 saves and was named the tournament's top goalkeeper.

Saint Francis University

The newest program in the ranks of the National Collegiate Athletic Association (NCAA), the Red Flash of Saint Francis University will compete in their first varsity season. Young in terms of experience, the Red Flash will make up for their lack of collegiate playing time through the knowledge of head coach Pat Beemer. Beemer joins the Red Flash with 11 years of collegiate coaching experience including nine years in the Division I ranks. He previously served as the men's and women's water polo head coach at Division III California Institute of Technology in Pasadena, Calif.. While there, Beemer turned around a program that was winless in 2011 and 2012 to a seven-win team in 2014. Additionally, he led two student-athletes to All-America selections in 2013 and 2014. Prior to his head coaching position with Caltech, Beemer served at Indiana University as the associate head coach for the women's program. In 2011, the Hoosiers made an impressive run, winning the Collegiate Water Polo Association (CWPA) tournament and finishing the sixth overall at the NCAA tournament. Beemer also helped the team set a program record 26 wins in 2011. While serving as associate head coach, Beemer also worked as Indiana's men's club water polo head coach. Over his three years the program became a perennial finalist in the conference tournament, with Beemer being named Big Ten Coach of the Year in 2012. He also coached the Big Ten Most Valuable Player in both 2012 and 2013. Beemer's first collegiate head coaching experience began in 2004 through 2010, where he was named the head coach of Wagner College's women's water polo program. The two time MAAC Coach of the Year, he led the program to two tournament championships in 2005 and 2007, and three regular season championships in 2005, 2006 and 2009.

University of Michigan

The University of Michigan is coming off its best season in school history, finishing fourth at the National Collegiate Athletic Association (NCAA) Championship, winning the Collegiate Water Polo Association (CWPA) title and reaching the 30-win plateau. Although the team lost Ali Thomason, a first team All-America selection and record holder for goals in a single season, as well as senior starters Kelly Martin (105 career goals) and Julia Campbell (47-13 career record in goal), the Wolverines do return three honorable mention All-America picks in senior Allison Skaggs, junior Caroline Anderson and sophomore Kim Johnson. Skaggs is one of three captains along with seniors Danielle Johnson and Heidi Moreland. Skaggs has 112 career goals inside and has been honorable mention All-America all three years. Anderson ranks fifth in school history after just two seasons with 127 career assists. She tallied a school-record 71 last season while also being an active defender with 101 career steals. Johnson set a freshman goals record with 62 on her way to CWPA Rookie of the Year honors. Danielle Johnson is a returning starter who had 34 goals and 15 assists last season while also earning the NCAA Elite 90 Award for excellence in the classroom. Moreland (30 career goals) and sophomore Julia Sellers (24 goals, 13 assists) are also key returners. Three newcomers to keep an eye on are goalkeeper Heidi Ritner, Maddy Steere and Skyler Pyle. Ritner is the USA Youth National Team starter in goal, leading them to a Fifth Place finish at the Youth World Championships in December after starting for U-M at the Collegiate Cup in November. Steere won gold with Australia at the 2015 World University Games and had five goals against the USA Youth Team at the Collegiate Cup. Pyle also showed an ability to score in November and is in the mix for the Wolverines' rotation this Spring.

DIVISION III

Carthage College

The Lady Reds of Carthage College return 11 athlete and will add seven more newcomers in 2017. Junior attack Allie Boothe highlights the returning group. The Wauconda, Ill. native earned 2016 Association of Collegiate Water Polo Coaches (ACWPC) Second Team All-American honors. Boothe also landed a spot on the 2016 Collegiate Water Polo Association (CWPA) All-Division III Conference First Team. Sophomore defender Jane Eckles, who earned 2016 CWPA Division III Rookie of the Year, also returns for the Lady Reds. Eckles also landed 2016 CWPA All-Division III Conference First Team accolades. Carly Strass, Elyssa Hawkins, Malea Fischer, Maddie Gronset, Mack Ryan, Laura Larsen, Jocelyne Sanchez, Jessica Graziano and Morgan Levy round out the returning group. Emma Jeronimus, Lauren Patt, Maggie Hennigan, Amy Blencowe, Heather Walker, Morgan Fingerson and Madi Anderson make up the rookie group.

Connecticut College

The 2013, 2014, 2015 and 2016 Collegiate Water Polo Association (CWPA) Division III Champion, Connecticut College begins a rebuilding phase in 2017 as the Camels will need to overcome the loss of Kelsey Millward and Abbey Wroblewski who guided the team to conference titles in each of their four-years in New London. Head coach Matt Anderson will have his work cut out for him in his third year at Connecticut. Experience and age will not be in short supply as seniors Sarah Sovia and Brianna Harrity join juniors Shannon Cry, Sarah Nappo, Paige Cackovic, Sophia Soriano and April Anderson. Sophomores Ashley Fitch and Peri Hummel will add to the team effort in the field in front of Sovia in cage. In addition, freshmen Ginny McCool, Kaitlin Reagan, Elaine Dealy and Hannah Rogers will aim to make an impact in their first seasons at Connecticut.

Grove City College

The Grove City College women's water polo team entering its 18th season of intercollegiate play this Spring with its sights set on a return to the top of the Collegiate Water Polo Association (CWPA) Division III ranks. The 2010, 2011 and 2012 CWPA Division III Champion, third-year head coach Alyssa Hunt welcomes back the majority of her team from last year which finished in Fifth Place at the CWPA Division III tournament.

Macalester College

A program on the rise in the Collegiate Water Polo Association (CWPA) and the national Division III ranks, the Scots of Macalester College will aim to improve on last year's Seventh Place finish at the league championship tournament. In the wake of Fourth and Fifth Place finishes at the CWPA Division III Championship in 2014 and 2015, respectively, second-year head coach Scott Reed will strive to put the Scots back on the right track to ascending the league standings and capturing the program's inaugural league championship. Arguably the youngest Division III team east of California, the Scots will rely on senior Liz Kelleher and junior Brooke Finney as the duo are the only rostered players with more than two years of experience on the collegiate level. Sophomore goalie Courtney Overland will lean on classmates Lucille Moran and Natalie Hoffman to be the cornerstones of Macalester's future success. Freshmen Jenny Granston, Oriana Galasso, Cara Mullery and Naomi Strait will work to make their impact felt as the Scots strive to rise above the pack.

Monmouth College

It's hard to imagine the possibility of the Monmouth College women's water polo team improving on last year's record season, but that's exactly what second-year coach Peter Ollis expects out of his young, talented team. "We're using last year as the motivation for this season," reported Ollis after the 2016 squad shattered the program record for wins. "We knew after that first weekend last year that we were a much different team than the year before. The big thing last year was that we left three or four games out there that were winnable. That was an experience factor, which we feel should play in our favor this season." If the Scots are to better last year's mark, they'll have to do it without any seniors on the squad and the loss of All-American and career-scoring leader Cassidy O'Connell. The Scots lost well over 100 goals with the graduation of O'Connell and three-year starter Kylee Winiecki. "We won't have just one person fill those holes," predicted Ollis. "We'll be much more balanced in scoring this year and will count on a team effort to make up the difference." Becca Dabrowski – a 5-foot-11 scoring machine who pumped in 36 goals last season to place second on the team – leads the offense. A pair of converted goalkeepers – Melissa Barrios and Rachel Unger – are among the returners who also pose scoring threats. "Becca is doing a great job of leading and, of course, will probably do the bulk of our scoring," said Ollis. "But she's not the only threat. Melissa and Rachel have stepped up and improved their offensive play. They were goalkeepers in high school, but they've

made nice transitions to the offense over the course of their college careers.” The Scots expect to get scoring punch from a trio of freshmen: Brittany Lira, Esther Hubbard and Emily Mathews. Ollis touts the three as “big-time scorers” who should help in carrying the load. “We’ll be moving a lot on offense,” claimed Ollis. “We don’t want to get stagnant and look for just one person to score. Our philosophy with this group is ‘The open shot is the best shot.’ We want to keep the offensive pressure on. I anticipate a much more balanced offense with four or five different people scoring.” Ollis’ offense will be tested in practice as they face all-conference goalkeeper Natalie Curtis. The junior turned in a school-record 19 saves in a single match last season and anchors a defense that expects to be hard to attack with veteran Brenna Bowers patrolling the water in front of Curtis. “I feel Natalie is the best keeper in the conference, hands down,” claimed Ollis. “We’ll run a variety of defenses to match her skill set. Brenna has the experience as our primary hole defender. She’s made huge improvements in her game.” Monmouth’s defense is also expected to get some help from Lira – a “very aggressive” defender – and Dabrowski’s long wingspan. The Scots are counting on an improved and experienced defense matched with a balanced, potent offense to make the difference in the handful of tight losses from last spring. The 2016 team posted more wins in a single season than had been recorded in the two prior years combined. That’s a stat Ollis would like to see raised again. “Our goal is to better last year’s win total,” said Ollis. “We want to see tangible growth in everything we do. Whether it’s from practice to practice or game to game, we want to be able to measure our improvements. We want to improve upon what we just did whether it’s an inch or a mile. Last year was a yardstick. We want to break that yardstick this year and create a new one.”

Penn State Erie, The Behrend College

Penn State Behrend will look to improve upon last season following a record best Fourth Place finish at the 2016 Collegiate Water Polo Association (CWPA) Division III Championship. Goalie Kara Stegmann will be relied upon to take the Lions to the next level, while Brittany Pinter, Allie Schneider, Maryn Horn and Clare Jefferys will anchor the offense. The future appears bright for Penn State Behrend as freshmen Alison McClure, Colleen Abanico, Jenessa Islas-Parker and Hollyrae Hanson join the squad to lay the groundwork for a potential future run at the championship in the coming seasons.

Utica College

On the heels of an Eighth Place finish at the 2016 Collegiate Water Polo Association (CWPA) Division III Championship, Utica College welcomes back leading scorer Krystiana Rehrig after totaling 35 goals and adding 15 steals last year. UC also brings back sophomore Hnyla Sloan, who finished third on the team with 11 goals and six assists to accompany 18 steals. Domenica Risucci, Alisha Kelly, Ashley Flint, Lara McNamara and Meagan Stanton also return to provide veteran leadership. In cage, sophomore Michalyn Winkler is back to backstop the Pioneers after she finished with 198 saves last year for the most stops by a Pioneers’ goalie over the past five seasons. Further, Winkler posted a team-best 32 steals to go along with three goals and two assists. In addition to the team’s returning talent, Utica welcomes three new faces to the roster this season, including Georgia All-State selection Daniella Hannah, as well as Emily Czerwinka of Pennsylvania and Rebecca Merrill of Massachusetts.

Washington & Jefferson College

First-year head coach Cassie Wyckoff takes over the Washington & Jefferson College Presidents’ program with one goal - win the first water polo league championship in school history following three straight runner-up finishes at the Collegiate Water Polo Association (CWPA) Division III Championship. The 2011 and 2012 runner-up to the Wolverines of Grove City College and the 2014, 2015 and 2016 second place squad behind the Camels of Connecticut College, W&J has been the most consistent program in the history of CWPA Division III play making five of the past seven title games. This year, Washington & Jefferson returns enough talent to veto four-time reigning champion Connecticut (2013, 2014, 2015, 2016) and take custody of the league championship plaque. Goalie Ally Hopkins joins fellow seniors Sarah Latzo, Madison Nervig, Tess O’Neill and Brittney Patterson for one final try at bringing the league crown back to Washington, Pa. prior to joining the ranks of program alumni. Juniors Lexie Gartner, Macel Reising and Liz Klock will look to aid the cause with sophomores Kirsten Yatsko and Amanda Borwegen strengthening the offense and defense. Freshmen Frances Sinclair, Chloe Magyari and Paige Adams begin their careers with hopes of being part of the Presidents’ team that broke through to reign as the league’s best.

***Check out videos, live streaming, archived broadcasts & other multimedia content at
www.collegiatewaterpolo.org/Multimedia***

CWPA CLUB TEAM PROFILES

ATLANTIC DIVISION

Duke University

Duke University begins the season after a year spent rebuilding. With a strong past of multiple Atlantic Division Championships, the Blue Devils are looking forward to continuing to be a competitive team. Duke's greatest strength lies in the years of experience that each starter brings to the team. Seniors Carly Pardo and Katherine Vayda return for their final season and are strong defensive players. Graduate students Brianna Walker, Megan Smith, Sarah McDonnell, Sarah Luksik and Abigail Chambers dominate the offense. Freshmen Ashley Marko and Caroline del Real are players to be reckoned with and will both get substantial playing time with Ashley Marko in the goal and Caroline del Real in the field. Tess McCloud, Kim Carlomagno, and Fangge Deng have picked up water polo quickly and are on the rise to becoming vital to Duke's success.

James Madison University

James Madison University has several returning seniors in field players Justine Chester, Sophia Brown, Lindsey Hunter and goalie Amanda Kousen who will seek to conclude their careers with the program's first division title since taking the Atlantic Division crown in 2003.

The University of North Carolina

The Tarheels of the University of Notre Carolina return this season with their full line up and a great group of new girls ready to learn the game. The returning players are eager to get back in the water and build upon the amazing progress they made last semester. Seniors Olivia Browning and Deanna Milunas look forward to leading the team to their best season yet. Increasing on their goalies from last year, goalie Elaine King is joined by Savannah Edwards and Evelyn Morris, two versatile new players who will be seen in the cage as well as in the field. In addition, returning set players Sara Siemens and Meg Fletcher are joined by Kylie Lawrence to further increase the depth of the bench.

University of Virginia

The 2016 Atlantic Division Champion, the University of Virginia went undefeated in division play to attend the National Collegiate Club Championship for the first time since 2003. In the week of an 11th place finish and the graduation of all six starting field players, UVA will begin this season with a young but promising lineup. The team welcomes 16 new players. Rookies Caitlyn Moser and Agni Stavrinaky, fourth year Olivia Sheffer, and graduate student Adele Young, who will be relied on heavily in the coming season. Notable returning players include goalie Caroline Harvey and field players Katherine Pajewski, Madeleine Keach, Austin Walker, Angie Kim, Ellen Beauchemin, Maggie O'Toole, Keziah Higginbottom and Emily Hybl.

Virginia Polytechnic Institute & State University

Virginia Polytechnic Institute & State University, more commonly known as Virginia Tech, will work to improve on last seasons' runner-up finish in the Atlantic Division to capture the Hokies' first-ever championship title.

BIG TEN DIVISION

Indiana University

Indiana University enters the season aiming to capture the program's first Big Ten Division title. Following Fourth (2016), Third (2015), Fifth (2014) and Sixth (2013) place finishes over the past several seasons, the Hoosiers have a few new girls coming in this semester who should aid the team dynamic.

Michigan State University

The three-time National Collegiate Club Champion (2001, 2002, 2006) Spartans of Michigan State University return five-of-seven starting players from the 2016 season. Last year, the team finished second in the Big Ten Division and at No. 7 in the final National Top 20 Poll. With the graduation of goaltenders Hailey Sheats and Lindsey Averill, the team will need to train a future goaltender and focus on defensive play. Key returning players include seniors Meredith McKeown, Callie Swan and Melissa Vesey; Junior Emily McCullough; and sophomores Jilian Eiken and Sarah Daugherty as the team will aim to win the division's first National Championship since 2006.

Purdue University

2017 will be a building year for Purdue University's club team following a sixth place finish in the Big Ten Division last season. Thanks to multiple incoming freshman and a strong and dedicated sophomore class, the Boilermakers are primed for growth in the future seasons to come.

The Ohio State University

The Ohio State University Buckeyes enter this season looking to improve upon their third place finish in the Big Ten Division last season. Graduating only one senior, OSU returns its core group of players, including center/team captain Megan Wolf, defender Maddie Franzoni, and utility player Katie Caldwell. Under the guidance of 2016 Big Ten Coach of the Year Nate Cohen, the Buckeyes hope to seamlessly integrate their first year student-athletes with their experienced group. After narrowly missing out on the division title game last year, the Buckeyes will be working hard towards their first title game appearance in hopes of securing a Big Ten championship and a bid to the National Collegiate Club Championship.

University of Illinois

The University of Illinois is optimistic about the upcoming season and ready to return to the water. Last season, the Illini suffered an upset in the first round of the Big Ten Division Championship, ending the season with a fifth place mark and a 6-5 record. This is not deterring the Illini as they aim to come out on top this year, conquering every challenge in their path. This season, the team will look to veterans Kat Dobrowski, Maddi Steiner and Shea Smith to lead the fight against top competitors. The Illini are blessed with incredible depth, looking to talented returners such as Kim Bello and lefty Laura Foss. Defensive set Mary Schiavone, goalie December Fagen, and the steals-leader Haley Hughes will lead the defense and stop teams in their tracks. With the loss of a strong senior class last year, sophomores Joanie Newland, Erin Yang, Fairie Hughes

and Nydia Garza are expected to step into leadership positions. The Illini also take pride in their newest members, including promising players such as Kim Bernhard, Alana Dean and Becca Kasner.

University of Iowa

Star play Amy Kopale is back after studying abroad during season last year for the University of Iowa. The team finished at the bottom of the Big Ten Division a season ago, but has a goal to place either fourth or fifth in this go around. Kim Durkin, Amy Kopale, Frankie Delleman, Gena Tanquilut, Ari Marban and Rebecca Robinson are expected to start. Carley Stewart, Gabby Chelette and Ally Cortez will come off the bench as other top returners. Newcomers Carli York, Alexis Anderson and Mara O'Connor should also contribute, while new goalie Jessica Wittenberg takes over in cage.

University of Michigan "A"

After finishing among the Top Four teams in the nation since 2010 with an active streak of eight consecutive Big Ten Division titles, the University of Michigan aims to finish what they started last season. The 2016 Women's National Collegiate Club Championship runner-up, the Wolverines return a bevy of talent primed to become the first Big Ten Division team to take the National Collegiate Club Championship plaque since Michigan State University last claimed the prize in 2006. First Team All-America selections/ captains Claire Bartosic and Desiree Cougill will be heavily relied on as offensive threats. Senior captain Becca Ford will lock down the defensive side and be looked to throughout the season for her leadership. Senior goalie Laura Bonebrake sets the tone for the Wolverines as she will provide consistency and stability during the season. Returning starters Hannah Cole and Julia Riemersma, senior Hannah Caywood and sophomore Hebe Clarke will all play vital roles in the success of the Maize & Blue's latest try for the National Championship.

University of Michigan "B"

The University of Michigan will field a "B" team to train new players and provide additional opportunities for more athletes to compete.

University of Wisconsin

After losing its team captain to graduation, the University of Wisconsin is excited about the addition of several talented freshmen. Kira Chavez, Mathilde Mogensen, and Holly Wegener are experienced players primed to lead the Badgers to the next level. A goal will be to ensure the new players have a chance to learn the game and blend in with the more experienced athletes. Additionally, goalie Rachel Privett will work with some of the younger players to guarantee continuity in cage following her graduation.

HEARTLAND DIVISION

Carleton College

The Righteous Babes of Carleton College look forward to a season with a strong class of freshmen. Returners Willa Langworthy, Grace Babbs, Laina Cross, Renay Freindshuh and Marly Schrom are excited to be back in the pool together. Renay Freindshuh will be in goal, ready to stop anything that comes here way. Freshman Rebekah Kissel brings years of experience, lightning speed and a strong arm to the squad, making her an invaluable offensive asset. Newcomers Katherine Erickson, Abby Gallin and Lindsay Brandt have proven to be quick-studies who promise to be threats in the pool.

Grinnell College

The Fireballs of Grinnell College are excited to compete in the

Heartland Division this season. A mix of enthusiastic returners and newcomers will light this team's fire for a quest to make the National Collegiate Club Championship.

Knox College

The Burning Squirrels of Knox College hope to continue growing together and experience a fun season.

Saint Mary's University (Minn.)

Saint Mary's University will aim to do well and have fun in fulfilling the team's potential as an up-and-coming water polo program in the Collegiate Water Polo Association (CWPA).

Washington University in St. Louis (Mo.)

After losing their senior core, the Bears of Washington University in St. Louis hope to return to the National Collegiate Club Championship under their new junior leadership of goalkeeper Isabelle Trier (2015-2016 First Team All-Conference/2015-2016 Honorable Mention All-America/2016 Heartland Division Most Valuable Player), defensive all-star Hayley Clocksin, and returning coach Dave Jimenez (2016 Heartland Division Coach of the Year). Backed by an experienced group of upperclassmen, including defender Natalie Goldman (2016 Second Team All-Conference/Honorable Mention All-America) and lone senior Becky Bavlsik, the Bears hope to make waves in the Heartland Division and emerge victorious once again. Helping the Bears to achieve these goals is an incredibly dedicated, formidable group of freshmen that bring promising talent and horizons to the team. Their contribution will add immensely to the fiery sophomore presence and help the Bears continue the legacy left behind by their graduates.

MID-ATLANTIC DIVISION

Carnegie Mellon University

Carnegie Mellon University returns with a large group following a Fourth Place finish at the 2016 Mid-Atlantic Division Championship. Having only lost two members and gaining five talented new players, the Tartans will no doubt have a strong showing this season. Under the guidance of coach Jen Swoyer and captains Maya Holay and Grace Dzina, the team is ready to succeed and dominate at this year's championship tournament.

Ohio University

Ohio University returns with a relatively young team and a new head coach, Olivia Sumner. Although the Bobcast lost three starters to graduation, the team has replaced them with young, hardworking players eager to get started in the competitive season. Ohio will focus on building a better, stronger team and working on teaching skills to new players. New goalie Erin Seymour is ready for the season. Captains Kaitlin Alzapiedi and Elizabeth Bryan enter their last competitive season as the only seniors on the team.

The Pennsylvania State University

Following Third (2012), Second (2010, 2013, 2014, 2016) and First (2011, 2015) place finishes in the Mid-Atlantic Division over the past seven seasons, the Nittany Lions of The Pennsylvania State University are eager for another appearance at the National Collegiate Club Championship tournament. Thanks to a group of experienced incoming freshmen and most of last year's squad returning for another go around in the Mid-Atlantic Division, the Nittany Lions are eager to return to the National Collegiate Club Championship. Key players for the season include Emily Argentati, Alex Stickler, Mikayla Masley, Claire Washabaugh and goalie Amy Frey. A four-time Mid-Atlantic Division champion (2001, 2005, 2011, 2015) and seven-time division finalist (2005, 2010, 2011, 2013, 2014, 2015, 2016), Penn State is primed to add another championship plaque to its collection.

University of Pennsylvania

The six-time (2004, 2006-2010) division champion Quakers of the University of Pennsylvania begin the season with a positive outlook. After overcoming head injuries last season, All-America honorees Nya Wilkins and Renee Chin Lee return to the field for the last time, with fellow seniors Lisa Nekrasova and Jenna Weber. The Quakers are excited to welcome back old teammate, Jessica Guzman '15, as a first-year graduate student. The loss of three strong seniors has been challenging; however, between the close-knit, talented upperclassmen and the addition of experienced freshman and sophomores to the team, the Quakers are confident that they can improve their Mid-Atlantic standing in the upcoming season.

University of Pittsburgh

The defending Mid-Atlantic Division Champion University of Pittsburgh Panthers strive to follow a historic 2016 season with another successful year. Last season marked the first division title and

National Collegiate Club Championship bid in program history. Pitt is thrilled and honored to be hosting the 2017 National Collegiate Club Championship as the team is guaranteed a spot in the field due to serving as the host site. The team is eager to return to the tournament and improve upon last year's 12th place mark. Although the Panthers graduated several key players, the team is left in the capable hands of junior leaders Abi Rubio and Maggie Walker. Pitt also returns a core of veteran field players including perennial all-star center/graduate student Leah McCarthy. She is joined by seniors Claire Schafer, Macy Divens and Maggie Mass; junior sprinter Genny McCarthy; and sophomore standout Sam Sullivan. A couple newcomers are also sure to make an impact right from the start. Pitt's signature defense will back sophomore goalie Abby Jarrett, who has worked tirelessly to improve in the off-season. Fast and strong utility players create a versatile Panthers' offense. A variety of scoring options combined with solid defense should make Pitt tough to beat on both ends of the pool this season.

West Chester University

Following Fourth (2015) and Fifth (2016) Place finishes in the Mid-Atlantic Division, the Rams of West Chester University will attempt to climb the ranks to reach the Mid-Atlantic Division Championship title game for the first time since 2005.

MIDWEST DIVISION

Grand Valley State University

Following seven runner-up finishes in the Midwest Division (2007-2010, 2012-2014), the Lakers of Grand Valley State University finally broke through to claim the 2017 Midwest Division Championship. GVSU comes into the season looking to replace a few key contributors from their championship squad. The team will rely on senior leadership to get through the early part of the season as younger players are brought up to speed. Hopefully, the team can improve throughout the year and be in the conference title mix at the Midwest Division Championship.

Illinois State University

With a batch of new talent, Illinois State University will compete in the Midwest Division for another year. A prior member of the Heartland (2013) and Great Plains (2014) Divisions, the program continues to seek its first trip to the National Collegiate Club Championship since taking the 2010 Heartland Division title.

Lindenwood University

The 2011, 2012 and 2013 Heartland and 2014 Great Plains Division champion, Lindenwood University will seek to claim the program's seventh crown (2007, 2008, 2011-2014) in the past 11-years as the Lions work to claim their first Midwest Division title. After three undefeated seasons in the Heartland Division and one in the Great Plains Division in 2014, Lindenwood has experienced some "ups and downs" in the Midwest Division with wins against college power houses such as the University of Michigan, Michigan State University and the University of Notre Dame. Even though the 2016 season was rough for the "Lady Lions", especially after being defeated by Notre Dame in the conference semifinals, Lindenwood finished the season with a 15-8 record. In the program's two prior trips to the National Collegiate Club Championship, Lindenwood finished Fifth (2013) and Seventh (2014). With a two-year under their belt in the Midwest Division, the Lions' current goal is to terminate Notre Dame and Grand Valley State University's domination of the group, capture the division title and earn a trip to the National

Collegiate Club Championship at the University of Pittsburgh. Lions' head coach Dave Miller looks forward to returning to Notre Dame for the Midwest Division Championship tournament as the Lions' men's team took home the 2016 National Collegiate Club Championship in South Bend. Thanks to an experienced group of returning starters and the addition of some new key players, Lindenwood will have a different look compared to previous years with major rebuilding plans in sight. Veterans Abby Connor, Michal Andreatta, Vladi Milutinovic, Heather Rosson, Abby VerMeer, Drew Lecuyer, Dani Rust, Amber Inouye, Claire Ulrich, Tiffany Rodriguez, Quincy Winship and newcomers Laia Pons, Delaney Simmons, and Sarah Rodriguez will work to bring the first Women's National Collegiate Club Championship to the state of Missouri.

McKendree University

McKendree University will aim to shake-up the Midwest Division in 2017 as the team contests its first season of intercollegiate club water polo.

Miami University (Ohio)

A seven-time (1996-1997, 2000, 2003-2006) Midwest Division champion and 11-time (1996-1997, 1999-2006) title game participant, the Miami University Redhawks come into this season with a clean slate and determination. After losing two seniors to graduation at the conclusion of the 2016 season, the team has been working to promote membership and build a well-rounded team in another quest for a spot at the National Collegiate Club Championship. The Redhawks will be comprised of nine returning players with several freshmen.

Saint Louis University

After making great improvements throughout last season, Saint Louis University looks to be competitive in the Midwest Division. SLU heads into the season with a relatively young team as the Billikens graduated one player after the 2016 campaign. Seven freshman have joined the team and now make up half of this season's roster. Freshmen players Allison Ney and Anna Sullivan are expected to make an immediate impact taking leading roles on defense. Sophomore Annika Hotchkiss returns as a force on offense after leading the Billikens in goals scored last season. Freshmen Jahnvi Modi and Tara White, along with junior Margaret Schneider, will also be relied upon heavily this Spring.

University of Cincinnati

The University of Cincinnati is excited to keep growing and improving as a second year team. With many new faces and some veterans, the Bearcats are comprised of a small group of female players who competed on the co-ed squad in the past. The team will look to expand its knowledge of the game and compete on a higher level for seasons to come.

University of Notre Dame

Notre Dame is excited to begin its 20th season as a club program, anchored this year by senior captain/goalie Caley Martinez, a two-time All-America selection and team leader in and out of the pool. Also returning for the Irish will be junior captain and dynamite set-defender Sammy Henze, a Second Team All-Midwest Division player from last season. Sophomore Victoria Devine adds talent to the defense as a dynamic, up and coming set defender who will provide Henze with some relief in this tough position. Sophomore Kelly Fricke, another Second Team All-Midwest player, takes on a greater role for the Irish on the offense following the graduation of her older sister and captain Colleen Fricke. Sophomore Amanda

Moriarty will also rise to become a more active shooter this season. Senior captain Katie Cullinan will continue to propel the Irish counterattack with her speed, while senior Andrea Solis contributes to the Irish's strong team defense. Sophomore Erica Evans should provide offensive strength for the Irish at set. The large sophomore class demonstrates great potential for the future of the Irish program, as Kristin Cullinan, Kelly Wentland, Ann Iverson and Emily Dufner all contribute to the depth of the Irish roster this season. Ultimately, with the help of the rest of the team and promising newcomers, the Irish stand positioned to reclaim the Midwest Championship title and make a strong run at the National Collegiate Club Championship.

NEW ENGLAND DIVISION

Boston College

Although Boston College lost three strong seniors, the team has many valuable players returning to the team who hope to capitalize on the existing team chemistry for a run at the 2017 National Collegiate Club Championship. The senior class welcomes back those abroad during last year's season, and can't wait to lead the team to victory. With new head coach in former New England Division Most Valuable Player Hannah Grotzinger joining the team, the Eagles are excited to see this season unfold. Returning First Team All-Conference player Heather Clark and Second Team All-Conference athlete Eliza Gross should be offensive and defensive standouts once again. Amanda Bolaños is happy to continue her dominance in goal, while the large sophomore class is ready to add speed and tenacity on both sides of the ball. The Eagles welcome four freshman to the nest, excited to see their talent make an immediate impact.

Boston University

Boston University comes into the season with many familiar faces and new talent. Last year, the Terriers finished second in the New England Division Championship after a hard fought title tilt against Middlebury College. Three out of four players recognized by the league last year return to again dominate the pool this season, alongside the talented Madie Janik, a freshman who takes over in net. The team will rely heavily on defensive leaders Adrienne Ingalla and Varsha Srivastava to command the team. Offensively, BU is in good shape as co-captain Ashley Reischman will continue to be a strong asset at set. Seniors Ali Nichols and co-captain Allison Durkan, as well as graduate students Allie DeLillo and Jillian Rausa, should rack up points with strong shots and smart drives.

Dartmouth College

A 10-time New England Division champion (2002-2005, 2007, 2009, 2011-2012, 2014-2015), the Big Green of Dartmouth College looks to improve upon a 5-3 record in 2016. After losing First Team All-Conference goalie Shelley Wenzel, the team strives to fill a defensive void with new netminder/junior Adina Harri. On offense, the team will rely on seniors and All-Conference selections PJ Bigley and Meghan Christie along with junior Jessie Jones for support. Thanks to freshman Hilday Friday, Dartmouth should have a stronger presence inside two-meters. Defensively, Emily Robertson and Abby Reynolds will work to frustrate the competition and keep the Big Green in games. Courtesy the speed of senior Hallie Huffaker, Dartmouth will be capable of playing an up tempo game. Led by new coach/2012 Collegiate Water Polo Association (CWPA) Coach of the Year Jim Wilson, the Big Green will gun to return to the National Collegiate Club Championship title game for the first time since back-to-back appearances in 2004 and 2005.

Middlebury College

The Middlebury College Panthers can not wait to dive in for another season of great water polo under the guidance of 2016 New England Division Coach of the Year Brian Goodwin and semi-pro golfer Tom McGinn. The reigning 2016 New England Division champions tied a program record with their Eighth Place finish at the 2016 National Collegiate Club Championship hosted by the University of California-Santa Cruz. The event provided a great learning experience for both new and seasoned players. Returning seniors Emily Bustard and Julie Erlich join the enthusiastic sophomore class of Emily Lewkowicz, Alaina Pribis, Kate Claman and Katie Corrigan along with Rebecca Lightman and Jocelyn Sullivan in forming the core of the Panthers' line-up.

Northeastern University

The Northeastern University Huskies are excited to play in their fifth official season in the Collegiate Water Polo Association (CWPA) with a young and motivated team.

University of Massachusetts

After a competitive 2016 season, the University of Massachusetts Amherst looks forward to making its mark on the New England Division this Spring. The hard work that players have put into training over these past few months will be tested by some strong opponents, but the Minutewomen are more than ready for the challenge. Junior Caroline Hultin anchors the defense in goal as the team looks to skilled players and captains Natalie Hansel and Corinna Torabi for leadership. Veteran players and upperclassmen Anna Campbell, Jessica-Sophie Horoschak, Katie Lavery, Michaela Savran and Ashley Toebe also bring their experience to the pool. Rounding out the roster are last year's newcomers, sophomores Allison Yeglin, Rachel Haley, Ali Lie, Lauren McGowan, Nadia Raytselis and Steph Ryan, all of whom have worked incredibly hard to sharpen their water polo IQ and are excited to see what this season brings. Under the coaching of men's team captain Collin Timmerman and with their combination of speed and strength the Minutewomen are a force to be reckoned with in 2017.

Wesleyan University

After a debut season in which the program finished in Third Place with only eight players and two graduating All-Tournament team members, Wesleyan University was forced to take a hiatus in 2016. The 2017 team will be led by senior Naomi Scharlin, who previously claimed All-Conference honors during the men's collegiate club season in the Fall. Juniors Lauren Conte and Corrine Noonan also return from the 2015 edition of the program. The trio are joined by a number of promising newcomers as sophomores Kylie Han, Sophia Antonio and Devon Cooper should contribute on both ends of the pool. Thanks to its additional numbers, the program hopes to capitalize on strong defensive tactics and quickness to keep the rest of the New England Division in check.

Williams College

After some close losses last year, Williams College is ready to step up and have a strong season. A class of new freshmen and the program's sophomore players have combined their speed, strength and hard work to prepare themselves for games. Junior/captain/goalie Katie Flaharty is sure to be both skilled and fearless in the goal this year. Seniors Susan Wu and Angela Chang hope to finish out their four-year polo careers on a high note, while new senior Jamie Lesser is excited to begin her water polo career. Returning juniors, Anna Frey, Eleanor Johnston and Tamar Aizenberg are back from a Fall semester abroad and ready to bring their passion and

talents back to the pool. Sophomores Cailegh Forbes-Cockell, Alia Richardson, Angela Tang and Jesse Facey were strong players last season and approach games with new confidence and hunger for victory. The freshmen are ready to learn the intricacies of collegiate club water polo and put their team into the New England Division Championship title game for the first time since 2012. Under the guidance of coaches Rob Hefferon and Mariko Moher the Ephs will be a force to be reckoned with in the New England Division.

NEW YORK DIVISION

Colgate University

Led by captains Taylor Dawson and Olivia Miller, Colgate University is coming off of a Second Place finish in the New York Division. A seven-time championship title game qualifier, Colgate is looking to build around its remaining core with a promising freshman class. Mack Neary returns as coach and brings a wealth of experience to the team.

Columbia University

A four-time champion in the New York Division (2001, 2003, 2007, 2013), Columbia University will need to fend off challenges from 2011 and 2012 champion Cornell University, reigning champion and eight-time victor (2002, 2004, 2008-2010, 2014-2016) New York University, back-to-back runner-up Syracuse University (2011, 2012) and seven-time runner-up (2001, 2003, 2005, 2006, 2010, 2014, 2016) Colgate University to claim another berth to the National Collegiate Club Championship. Following a successful offseason spent recruiting new players, the Lions will have a large freshmen base that should help propel the team to be competitive on both defense and offense. Freshman Ruthie Kornblatt-Stier and sophomore Amy Gong Liu will trade off between two-meter defense and offense, and powerhouse offensive players Maryann Verghese, Electra Williams, and Hannele Jane will be the chief suppliers of goals.

Cornell University

The Cornell University Big Red will strive to pick-up their fifth New York Division crown (2005, 2006, 2011, 2012) with a roster of experienced and newcomers ready to put their institution back on top of the New York Division for the first time in five years.

New York University

The 2014, 2015 and 2016 division champion, New York University comes into the 2017 season after claiming its third consecutive title for the second time in New York Division history (2008-2010). Possessing a mix of returning members and new additions with a mix of experience and speed, the team should be a formidable opponent within the division. An eight-time New York Division Champion (2002, 2004, 2008, 2009, 2010, 2014, 2015, 2016), NYU should once again be a contender to earn its way back to the National Collegiate Club Championship.

Syracuse University

Syracuse University is looking to improve on a Fifth Place finish in the New York Division a year ago. With their coach and Most Valuable Player Belle Cutbirth graduating, the team will need to rebuild. The Orange will field a new roster in 2017 with only two returning players. Syracuse will need to rely on new players to find their place in the field early and lead the team on offense. Team captains Brittany Muller and Melissa Rule hope to see each individual player improve their skills as the Orange ascends the New York Division standings.

NORTH ATLANTIC DIVISION

Bates College

On the heels of Fifth (2015) and Sixth (2016) Place finishes in the North Atlantic Division, Bates College will venture to rebuild its program in 2017.

Bowdoin College

Bowdoin College is looking forward to an exciting season of rebuilding and opportunities for harnessing potential. Coming back this year is North Atlantic First Team All-Conference selection Erin Houlihan whose voracious attitude makes her a stellar all-around player and a big threat. Linnea Patterson is a lethal finisher in front of the net. Sara Baronsky is back for another season in front of the net after recovering from an injury in 2016. The Polar Bears also boast a solid line of returners including Isabel Schwartz and Raquel Santizo whose prowess on defense will be vital to the team. Coming off of an exciting co-ed season in the Fall, Katie Paris, Karla Olivarres and Ellie Quenzer are primed to take the women's campaign by storm. Up-and-coming sophomores Molly Foley and Maisie Campbell are the future of the team. Newcomer Caitlin Loi is excited to learn the ropes after a successful swim season. Last year, eight Polar Bears earned a spot on the Collegiate Water Polo Association (CWPA) Scholar-Athlete Team as the Polar Bears are excited for another season of beautiful, fast and smart water polo play.

Massachusetts Institute of Technology

A three-time division champion with titles in 2005, 2006 and 2007 and runner-up marks in 2008, 2009 and 2010, the Massachusetts Institute of Technology will seek to make its seventh North Atlantic Division title game appearance in the past 12 seasons. For the past two seasons, the Engineers finished in Third Place during the regular season and the division championship tournament. This year, MIT would like to improve on its marks for the 2017 season. Returning for his second season, coach Andres Simauchi brings his expertise to the team as both a seasoned player and experienced coach. This year, the MIT team is delighted to be lead by returning player Cecilia Viggiano and captains Sophie Peterson and Leilani Gilpin. While the team graduated a couple players last year, the team captains will look to other returning players in graduate student Sarah Fay and Elise Ledieu; sophomores Alexis Jones, Haley Bergman, Clare Wieland and Vivian Zhang in goal, and senior Maddie Severance for support. The team will also benefit from new talent including Rio Lavigne, Emily Malison and Judit Francesch.

Tufts University

A newcomer to the division, the Tufts University Jumbos are excited for their first season of women's water polo. Thanks to a mix of new and experienced players, the Jumbos hope to be a competitive presence in the North Atlantic Division this year and into the future.

University of New England

Another newcomer to the division, the University of New England will compete in its inaugural season as part of the Collegiate Water Polo Association (CWPA). The team's first year as a collegiate club program will be a learning experience as many players are new to the game.

Wellesley College

Wellesley College finished in Second Place in the North Atlantic Division and a No. 15 ranking in the final Women's National Collegiate Club Top 20 Poll. The division's representative at the 2016 National Collegiate Club Championship hosted by the University of California-Santa Cruz due to champion Yale University electing to not attend the event, Wellesley will try to make its way to the 2017 National Collegiate Club Championship at the University of Pittsburgh via this year's North Atlantic Division crown. The loss of three seniors will leave a void in the team's offense, but one that the program's new players are sure to fill for another run at the title. Led by senior Kelsey Moran and sophomore Claire Whitaker, Allison Fernandez and Hershel Carbajal-Rodriguez along with fellow returning players Briana Miller, Rachel Utomo, Nikki Rodriguez, Katina Maria Orive and Emily Yax, Wellesley is happy to welcome back Jerry Moss for his second season as the team's head coach. The team is also excited to welcome back recent alum Cassandra Flores-Montano as the program's assistant coach.

Yale University

Yale University is looking forward to building on last season's North Atlantic Division Championship success. The team capped an undefeated season by capturing the North Atlantic Division Championship - a pattern Yale hopes to repeat in 2017 under 2016 Coach of the Year Catherine Flint's instruction. Relying on seniors Taylor Church, Brynne Follman and Kimberly Guo to lead the offensive charge, the program will look to Alex Zafran to control the two-meter position. Yale's offense will also be aided by speedy counterattacks from Andrea Basaraba and Anna Wujciak. On defense, Church will play a pivotal role in the two-meter position, while veteran goalie Brittany Fitzgerald strives to keep her sheet clean between the pipes. While the team has been forced to readjust due to injuries that will keep captain Eileen Johnson from competition, freshmen players are ready to jump in and help bring the North Atlantic Division Championship back to New Haven for the third time in the past five years.

NORTHWEST DIVISION

Oregon State University

Oregon State University is hoping to have another outstanding season after finishing among the Top Four teams in the Northwest Division for the past seven seasons.

Portland State University

Portland State University has experienced significant success in the past four seasons with a Northwest Division title (2013) and back-to-back runner-up finishes (2014, 2015). Thanks to a strong group

of women who built the foundation who created and shaped the program, the squad has a legacy of success. However, the loss of several key players from that group will force Portland State into a rebuilding process in 2017 for success in the years to come.

University of Oregon "A"

After an Eighth Place finish at the 2015 National Collegiate Club Championship tournament, and a runner-up finish in the Northwest Division last year, the University of Oregon "A" team is determined to qualify for Nationals again with a Northwest Division title and move into the top five teams at the event. Having lost four seniors in Annie Arcuri, Brett Higgins, Brittany Luna and Emily England, there are some definite holes that will need to be filled for the Ducks to challenge reigning division champion the University of Washington for the top spot. A rapidly growing team means there will be a lot of opportunity for some new players to shine.

University of Oregon "B"

The University of Oregon will field a "B" squad in order to train new players and provide additional opportunities for more athletes to compete. This team has been competing at a higher and higher level each year, and 2016 will be no exception to the rule. These Ducks are a competitive team, and are determined to prove it to the rest of the division.

University of Oregon "C"

A greater than anticipated turnout allows the University of Oregon to field a "C" team for the first time in 2017.

University of Washington "A" (Wash.)

After back-to-back Fifth Place finishes in the Northwest Division, the University of Washington Huskies claimed the program's sixth (1998-2001, 2003, 2016) championship last year. A seven-time (2002, 2004-09) runner-up, the Lady Dawgs will aim to repeat the feat from 2016 by recapturing the Northwest crown and returning to the National Collegiate Club Championship once again.

University of Washington "B" (Wash.)

The University of Washington will field a "B" squad in order to train new players and provide additional opportunities for more athletes to compete.

Western Washington University

Western Washington University starts off the season with lots of fresh faces. Thanks to five returners in this year's lineup, the Vikings are optimistic in their potential and range of skill levels. After breaking a three-year losing streak in 2016 to finish in Sixth Place, Western Washington hopes to continue its progress.

PACIFIC COAST DIVISION

California Polytechnic State University

The most successful collegiate club water polo program in the history of women's competition with seven National Collegiate Championship seasons (2003-2005, 2008-2011), California Polytechnic State University brings back several key players looking for the program's 14th Pacific Coast Division Championship. Following back-to-back-to-back runner-up finishes in the division over the past three seasons, the Mustangs are primed to return to the dominance that saw the team run-off nine division crowns from 2005-to-2013. Goalie Sierra Sheeper and two-meter defender Jessie Smith will captain a young Cal Poly team that has only two seniors - Becca Riley and Molly Casey. All but one starter from the 2016 team returns for the Mustangs as the team is a favorite to contend for the Women's National Collegiate Club Championship this season.

California State University-Long Beach

California State University-Long Beach will compete in its third season as part of the Pacific Coast Division. Although the team lost a number of key players last semester, including Christine MacLennan, replacements abound with Tara Kemp and Marti Ray Grois taking over netminding duties. Coach Tyler Trute departed the team prior to the season as Derek Anderson will take control of the squad for the 2017 campaign.

University of California-Los Angeles

The University of California-Los Angeles enters the 2017 season with high expectations. Under the experience and leadership of new head coach MacGregor Sanford, the Bruins move into a rebuilding season with optimism and enthusiasm. Boasting twenty-two new recruits, the Bruins seek to improve upon their previous year's standing and top the Pacific Coast Division. A seven-time division runner-up (2002, 2004, 2007-2011) and 2001 champion, the team will rely heavily upon its speed, diverse skill set and cohesion to be a strong competitor. The energy and skill of the new recruit class balances the experience and resilience of the veteran players, resulting in an optimal diversification and balance of efforts. The Bruins are excited for a competitive season and are determined to challenge its division rivals.

University of California-Santa Barbara

This is the seventh season for the women's club water polo team at the University of California-Santa Barbara. Captains Sofia Contreras and Rachel Vaughn-Hulbert have high hopes for their team after returning from an undefeated season and winning the National Collegiate Club Championship in 2016 at the University of California-Santa Cruz. Dan Loman returns for his fifth year coaching the Gauchos along with his assistant coach Heather Borek-Klempfner. Veteran players Emma Adams, Erica Weed, Allison Griffith, Rea Brakaj, Shannon Grossman, Ann Webber-Bruya, Emily Von Gerichten and Alyson Osgood, in addition to a handful of new players, are determined to return to the National Championship tournament this year and join California Polytechnic State University (2003-2005; 2008-2011) and the University of California-Davis (2012-2013) as the only teams to repeat.

University of California-Riverside

The University of California-Riverside is new to the Collegiate Water Polo Association (CWPA) this year. A team filled with enthusiastic college students who all share the same passion for water polo, the

majority of the athletes on the roster played the sport in high school or on a club team. With an array of experience levels, each player has something special to contribute to the team. Throughout this next season, they will test their team chemistry and continue to build on it.

University of Southern California

The University of Southern California is excited for the upcoming season after placing Third (2013, 2016), Fourth (2015), Fifth (2009), Seventh (2012) and Eighth (2010, 2011, 2014) in the Pacific Coast Division over the past eight seasons. Last year, the team finished in Fifth Place during the regular season prior to notching a Third Place mark at the Pacific Coast Division Championship. Nearly 100 percent of last year's Lady Trojans are back, along with a handful of talented freshmen, giving the team the depth and strength needed for success in arguably the most competitive division in collegiate club water polo.

ROCKY MOUNTAIN DIVISION

United States Air Force Academy "A"

The United States Air Force Academy comes into the season after recruiting nine talented freshmen to fill out the roster. Air Force will aim to qualify for the Rocky Mountain Division Championship title game for the first time in 2017. The Falcons last made a division title game in 2009 (Southwest Division) and previously took home the 2005 Southwest Division crown.

United States Air Force Academy "B"

The United States Air Force Academy will field a "B" squad in order to train new players and provide additional opportunities for more athletes to compete.

University of Colorado

A team dedicated to improvement and fun, the Buffaloes of the University of Colorado finished in Second Place to the University of Utah in the past two Rocky Mountain Division title games after earning Seventh (2014), Fourth (2013) and Fifth (2012) Place marks in the Southwest Division. Colorado will work to improve and finish on top of a division for the first time since capturing the 2003 Southwest Division title.

University of Denver

The University of Denver Pionners will strive to improve on Fourth Place finishes in Rocky Mountain (2015, 2016) and Southwest (2014) Divisions over the past three seasons.

University of Utah

A seven-time Southwest (2002, 2004, 2006, 2010) and Rocky Mountain (2011, 2015, 2016) Division champion with a trio of runner-up finishes (2003, 2005, 2007), the University of Utah has 10 returning players and four newcomers primed to lead the Utes back to the National Collegiate Club Championship tournament.

SIERRA PACIFIC DIVISION

California State University-Chico

California State University-Chico jumps into the 2017 season with an equal number of returning players and new players dotting the roster. Last year, the team finished in Third Place at the Sierra Pacific

Division Championship and wrapped up the year with an 11th place mark in the final National Top 20 Poll. Led by Sierra Pacific Division All-Conference First Team selection Madison De Ronde and second team members Jamie Eliot and Allison Moore, Chico will strive to return to the National Collegiate Club Championship for the third time after finishing as the Sierra Pacific Division runner-up in both 2008 and 2009.

California State University-Maritime Academy

The Keelhaulers of California State University-Maritime Academy will start the season with a well balanced team. Led by senior/team captain Paige Mullaney, the Keelhaulers look to improve on their success from last year and move up a few spots in the Sierra Pacific Division. The team will have strong leadership from its returning players as juniors Sarah Mena, Jen Boswell and Dalal Muqatash along with sophomores Alisa Gunter and Jessie Kanehl will provide outstanding offense and defense. The Keelhaulers are also probably bringing in their best recruiting class for the women's program. Following the loss of the team's goalie to graduation, Nina Takamoto is looking to fill the void in the cage. Freshmen Sydnee Mena, Flora VanderSchoot, Halice Wright and Samantha Kruschke all come in after logging minutes for their high school and club programs.

California State University-Fresno

The 2007 National Champion returns to the league in 2017 as California State University-Fresno (Fresno State) will once again battle to be the dominant women's collegiate club program in the country.

Saint Mary's College of California

The 2016 will be the second season in which Saint Mary's College of California has a team with enough committed players to compete in the Sierra Pacific Division and the Collegiate Water Polo Association (CWPA). A relatively new team with a lot of inexperienced players, the Gaels hope by working together and developing their skills the program will grow and prosper over the next several seasons.

San Jose State University

San Jose State University will compete in the Sierra Pacific Division of the Collegiate Water Polo Association (CWPA) for a second year with the intention of rising up the ranks and competing for the National Championship in the years to come.

University of California-Berkeley "A"

The University of California-Berkeley "A" Golden Bears are back in the pool working hard after finishing second to the University of California-Davis in the 2016 Sierra Pacific Division Championship title game. The Bears captured the 2015 Sierra Pacific Division Championship title for the first time in the club's history with a thrilling 11-10 overtime victory against 2012 and 2013 National Champion UC-Davis, but was unable to repeat the feat last season. The 2015 National Collegiate Club Champions, California once again has a promising outlook with a strong number of new players in addition to the core of returning student-athletes. Driven towards another Sierra Pacific Division and National Collegiate Club Championship, the team will focus on one game at a time as the Golden Bears work to continue to program's legacy.

University of California-Berkeley "B"

The University of California-Berkeley will again field a "B" team after first registering two teams last season. Comprised of mostly new members who are eager to participate in the Sierra Pacific Division, the the Golden Bears "B" squad is looking forward to further developing its skills and gaining experience.

University of California-Davis "A"

After a third place finish at the National Collegiate Club Championships in 2016, the University of California-Davis "A" Aggies seek a national title to add to the back-to-back titles 2012 and 2013. Although the team graduated two key players, a squad of returners combined with a variety of new talent hope to bring success in the pool. Aleya Spielman, Emily Gould, Marie Popp and Michaela Tillinghast return for their fifth and final season of competition, bringing welcomed leadership and experience to the team. The defensive team efforts of the Aggies will be matched with offensive contributions from senior Asha Pluton. Diana Hatamian, Julia Kinsolving and Sofia Caryotakis are prepped for their third season of play to protect fellow junior Kelley Cartwright in the cage. The team welcomes the new talent of senior Aria Lindsey, juniors Dalylce Marglon and Lauren Lesyna, and freshmen Carmen Steinmeier, Cassidy Crouch and Sydney Preston. Led by Robert Clemons with the assistance of Tennyson May, UC-Davis is determined to its next National Championship in 2017.

University of California-Davis "B"

The University of California-Davis will once again field a "B" squad in order to train new players and provide additional opportunities for more athletes to compete. The UC-Davis "B" team finished in Fifth Place at the 2016 Sierra Pacific Division Championship tournament following a regular season Fourth Place mark. With a large number of returners and matched in skill by new players, the team hopes to surprise the Sierra Pacific Division with a deep roster of talent. Under the guidance of coach Tennyson May, the Aggies are prepared to improve their ranking and make some waves.

University of California-Santa Cruz "A"

The Banana Slugs of the University of California-Santa Cruz "A" enter their eighth season with the Collegiate Water Polo Association

(CWPA) in hopes of claiming another division championship after grabbing the 2010 and 2012 Sierra Pacific Division plaques.

University of California-Santa Cruz "B"

The University of California-Santa Cruz will field a "B" team in 2017 to train new players and provide additional opportunities for more athletes to compete during the course of the season.

SOUTHEAST DIVISION

Emory University

The Eagles of Emory University fly into the 2017 season with strength and confidence. Emory continues to grow as a team with the largest freshman class in the program's history. Although the team lost its senior leaders last year, captains Julia Caldwell and Zoe La Soya will lead their teammates with an army of freshmen and group of experienced players primed to fight fiercely for First Place in the Southeast Division. The team welcomes freshmen Emily Baker, Julia Bartol, Caroline Cohen, Katie Lambert, Pamela Niditch, Shreeja Patel, Leah Scott, Lauren Treiman, Isabel White, Caroline Wilkinson and Joan Zhang who will be the future of the Emory Eagles in the coming years.

Florida State University

Florida State University comes into this season feeling prepared and confident to improve on the past three seasons' Third (2013), Fourth (2014, 2016) and Second (2015) place finishes at the Southeast Division Championship. The Seminoles have the program's largest freshman and sophomore classes that are more than eager to showcase their talents in 2017. Seniors Sarah Ojalvo, Keri Ciancio and Elena

Vallalta return for their final season with hopes of claiming the Southeast Division title for the first time and earning a trip to the National Collegiate Club Championship. FSU is looking forward to the season at hand with eyes on incorporating its new players in a quest to make the division title game for the fifth time (2004, 2005, 2008, 2015).

University of Central Florida “A”

The 2015 Southeast Division Champion, the Lady Knights of the University of Central Florida will work to overcome perennial nemesis the University of Florida and challenger Florida State University to reclaim the division crown in 2017. The 2006, 2007, 2011, 2012, 2014 and 2016 Southeast Division Championship runner-up to the Gators, Central Florida will attempt to pick up the program’s fifth division crown after previously netting the 2009, 2010, 2013 and 2015) plaques.

University of Central Florida “B”

The University of Central Florida will field a “B” team in 2017 to train new players and provide additional opportunities for more athletes to compete during the course of the season.

University of Florida “A”

A 12-time (2001-2008, 2011, 2012, 2014) Southeast Division champion, the University of Florida “A Team” made waves after a hard-fought Fourth Place finish at the 2016 National Collegiate Club Championship hosted by the University of California-Santa Cruz. Going into this season, coaches Katie and Tim Larson are optimistic that the team’s rise to the top is just getting started. With senior Katie VanDeventer and a remarkable sophomore class comprised of Jessie Modrak, Hayley Suraci, Jacqueline James and Mariana Lombello leading the offense, the Gators are hoping to chomp the competition this season. The team is confident with returning goalie Sierra Leete in the cage, as well as junior Marcella Gallardo leading the team’s strong defensive mentality to shut down opponents. Look out for the Orange & Blue as Florida is working hard to make it to the 2017 National Collegiate Club Championship and bring home the National Championship title to the Sunshine State for the first time. If Florida makes it to the National Championship tournament, expect a Top 10 finish as the Gators have placed Second (2001, 2006), Third (2002, 2004, 2012), Fourth (2003, 2016), Fifth (2000, 2011), Seventh (2008), Eighth (2014) and Ninth (2005, 2007) in 12 previous trips to the event.

University of Florida “B”

As the only “B” team in the Southeast Division for the 2017 season, the University of Florida “B” squad is looking to make a splash this year with a well-rounded mix of returning talent and newcomers. This team, filled with youth, enthusiasm, and growing talent, has never failed to put up a fight against the competition. Florida “B” welcomes back a trio of talented netminders with starter Emily Stevenson, Daniela Ortiz, and Shannon Komisarchik dominating in the Gators’ goal. Thanks to rising playmakers such as freshman Angela Vazquez and sophomore Emily Fennel, the Gators are hungry for success with a goal of making it an all-Florida Southeast Division Championship final (Florida “A”-vs.-Florida “B”).

SOUTHWEST DIVISION

Arizona State University

The 2011, 2012 and 2014 Southwest Division champion Arizona State University Sun Devils look to restart their string of success.

ASU will need to overcome four California schools and longtime foe the University of Arizona to claim the division title and a return trip to the National Collegiate Club Championship for a chance to become the first team from outside either Washington, California or Michigan to claim the women’s National Championship.

San Diego State University “A”

San Diego State University is coming off three consecutive division titles as the Aztecs claimed the 2014 Pacific Coast Division and National Collegiate Club Championships crowns prior to taking home the 2015 and 2016 Southwest Division crowns. The team continues to grow under head coach Jamie Cassidy and assistant coach Brooke Embernate as the Aztecs have been mentioned in the conversation regarding the nation’s best teams over the past several seasons. Aiming to improve on last year’s Fifth Place finish at the National Collegiate Club Championship, the team will rely on All-Southwest Division and All-America athletes in Nicole Ryder, Kayla McGowen, Colleen Boensel, Frannie Kuesis and Kelli Bowling. Several new athletes also join the roster looking to make an immediate impact both offensively and defensively for the Aztecs. San Diego State is looking forward to getting back into competition and finishing the season strong at the National Collegiate Club Championship on the campus of the University of Pittsburgh.

San Diego State University “B”

For the third time in the history of the program, San Diego State University will field a “B” team. The Aztecs’ second competing squad will be a combination of both returning and new players. The Black Team, as SDSU refers to its “B” team, has seen a considerable amount of growth over the past several seasons and is anxious for the chance to continue improving while competing against some of the nation’s best teams. This second team not only allows more players to have time in the water, but it also provides new members a chance to learn how the team plays in a competitive setting.

University of Arizona

A seven-time Southwest Division Champion with titles in 1998, 2000, 2001, 2007, 2008, 2009 and 2013, the Wildcats of the University of Arizona rejoined the Southwest Division prior to the 2016 season after a year in the Rocky Mountain Division. Fielding a roster featuring 12 new players, the Wildcats will have a new coach in 2017 as first-year mentor Dani Phelps has been working hard to get the team ready for another run at the division crown.

University of California-Irvine

A former member of the Pacific Coast Division along with fellow Southern California institutions San Diego State University and the University of California-San Diego, the University of California-Irvine is coming off back-to-back successful Southwest Division seasons in 2015 and 2016 with Second and Fourth Place marks, respectively. Although the team said farewell to several key players last season, a group of promising newcomers will provide the backbone of the Anteaters’ line-up in 2017. Second year head coach Alec Follmer has been busy getting the team ready to have a fun and successful season.

University of California-San Diego

The Tritons of the University of California-San Diego remain among the top teams in its division after placing Third (2009, 2010, 2012), Fourth (2013), Fifth (2011) and Seventh (2014) in the Pacific Coast Division prior to notching a Fourth (2015) and Second (2016) Place marks in the Southwest Division the past two seasons. Courtesy a deep roster of talent comprised of 14 returning players

and 13 new recruits, the Tritons are hopeful for a successful 2017 season with their eyes set on a trip to the National Collegiate Club Championship at the University of Pittsburgh. King Triton looks to the future excited for his army to help him take back his throne as Champion of the Southwest Division.

TEXAS DIVISION

Baylor University

The Baylor University Bears continue a steady rise up the division ranks as the team strives to improve upon the past three years' Sixth (2014), Fifth (2015) and Third (2016) Place finishes in the Texas Division.

Rice University

The Owls of Rice University, who earned Fourth (2013), Fifth (2014) and Seventh (2015, 2016) place finishes in the Texas Division over the past four seasons, will work to bring a division championship home for the first time since the 2003 through 2006 seasons. Rice experienced a solid recruitment cycle last semester to field a number of new players excited to learn more about water polo.

Texas A&M University "A"

Texas A&M University "A" looks forward to a promising season with the goal of heading to the National Collegiate Club Championship at the University of Pittsburgh after capturing the Texas Division Championship. Led by seniors Veronica Hadley, Elizabeth Crowling and Kamryn Pursell, along with sophomores Christina Lewandowski and Linden Overbey, the Aggies seek to rebound from a second place finish in the Texas division last year following three straight crowns (2013, 2014, 2015). Graduating only a couple of players, the team's experience and chemistry are at an all-time high. Unlike the past few years, the Aggies will be coached by two members of the institutions' men's team: Billy Boone and Axel Rodriguez. The 2001, 2008, 2010, 2013-2015 Texas Division Champions, the Aggies will seek to claim the program's seventh division title since 2001. If Texas A&M claims the division title and an automatic berth to the National Collegiate Club Championship, look for the team to have some success as the Aggies continue a climb to the top of the collegiate club scene as the team previously placed Eighth (2001), 12th (2005, 2013, 2014), 15th (2008, 2015) and 10th (2010) in seven prior trips to the tournament.

Texas A&M University "B"

Texas A&M University will field a "B" team for the first time in

history. Fielding another team will provide additional playing time for both new and old members. It will also allow the Aggies to grow in talent and experience.

Texas Christian University

The Horned Frogs of Texas Christian University joined the Collegiate Water Polo Association (CWPA) for the first time in 2015 and performed very well with a small team compared to the rest of the Texas Division. TCU has surprised many of the established teams in Texas with their speed and experience level.

Texas State University

The Bobcats of Texas State University will once again be small in number with plenty of excitement for a chance to compete. Last season, the team finished in Sixth Place after notching a runner-up placement in 2015.

Texas Tech University

Beginning its ninth season in the Collegiate Water Polo Association (CWPA), the Texas Tech University Lady Raiders finished in Fourth (2014), Sixth (2015) and Fifth (2016) Place in the Texas Division over the past two seasons. Via the presence of some key returning team members, and the addition of newcomers joining the team, the Lady Raiders hope to be contenders for a top spot in the division title race.

The University of Texas

The University of Texas has high hopes after a successful 2016 season. Last year, the Longhorns finished ranked at No. 13 in the final Natianl Top 20 Poll after an outstanding division run that advanced the squad to the National Collegiate Club Championship for the first time since 2012. Texas returns four of the program's five All-Conference selections a year ago, including Texas Division Most Valuable Player Michaela Marshall. The Longhorns maintain the majority of their championship roster as only three of the athletes from the 2016 squad do not return for another go at claiming the program's five-ever National Collegiate Club Championship. In addition, eight new members will don the Burnt Orange and White to battle for the program's 10th division title game appearance since 2007 and sixth championship (2002, 2007, 2009, 2011, 2012, 2016) of the 21st century.

***Check out videos, live streaming, archived broadcasts & other multimedia content at
www.collegiatewaterpolo.org/Multimedia***



TURBO[®]

EXCLUSIVE
DISTRIBUTOR

kap7waterpolo.com
turbo.us



CWPA VARSITY TEAM ROSTERS

DIVISION I

Brown University

Head Coach: Felix Mercado

1	Marisol Dakan	Jr.	Pasadena, Calif.
1A	Lauren Burns	Fr.	Long Grove, Ill.
1B	Sahana Nazeer	Sr.	Franklin, Mass.
1C	Imani Herring	Jr.	Pittsburgh, Pa.
3	Hannah Eliot	Fr.	Los Angeles, Calif.
4	Hannah Koper	Sr.	Santa Barbara, Calif.
5	Carmen Rosas	So.	Schaumburg, Ill.
6	Marisa Kolokotronis	Sr.	Sacramento, Calif.
7	Jessica Heilman	Jr.	Menlo Park, Calif.
8	Shannon Crowley	Sr.	Seal Beach, Calif.
9	Maigrie McDougal	So.	Sacramento, Calif.
10	Anne Warner	Sr.	Marin, Calif.
11	Ally Donahue	Jr.	Tampa, Fla.
12	Jamie Smith	Fr.	Lexington, Ky.
13	Lexi Atwell	Fr.	La Jolla, Calif.
14	Lucia Adami	So.	Brookfield, Ill.
15	Audrey Flower	So.	Portola Valley, Calif.
16	Jourdan Meltzer	Sr.	Oakland, Calif.
17	McKenna Miller	So.	Danville, Calif.
18	Allison Woo	So.	Arcadia, Calif.
19	Montana Fowler	So.	Santa Cruz, Calif.
20	Korbyn Simpson	Jr.	Baltimore, Md.
21	Tiffany Zhao	So.	Beaverton, Ore.
23	Ellyn Vitek	Sr.	Western Springs, Ill.
24	Catherine Roach	Sr.	Colorado Springs, Colo.
25	Olivia Katcher	Jr.	Hollywood, Fla.
25	Hailey Jacobson	Jr.	Missoula, Montana

Bucknell University

Head Coach: John McBride

1	Haley Derrod	Sr.	Bonita, Calif.
1A	Manuela Herrera	Jr.	Windermere, Fla.
2	Julia Ulrich	Sr.	Glencoe, Ill.
3	Tegan Stanbach	Sr.	Menlo Park, Calif.
4	Shyla Lintz	Jr.	Mechanicsburg, Pa.
5	Sarah Mooney	So.	Piedmont, Calif.
6	Arianne Evans	Fr.	Laguna Nigel, Calif.
8	Eliza Romeyn	So.	Durham, Conn.
9	Chelsea Scuderi	So.	Boca Raton, Fla.
10	Emily Konishi	So.	Santa Anta, Calif.
11	Colleen Barron	Jr.	Darien, Ill.
12	Katie Nedrow	Fr.	Irving, Texas
13	Regina Younger	So.	Simi Valley, Calif.
15	Matylda Zaklicki	Fr.	Shillington, Pa.
16	Nina Benson	Fr.	Hendreson, Nev.
17	Marta Considine	Jr.	Wilmette, Ill.
18	Savannah Weaver	Fr.	San Jose, Calif.
21	Gigi Rojahn	Fr.	Palo Alto, Calif.

George Washington University

Head Coach: Adam Foley

1	Katherine Moeller	So.	Northford, Conn.
---	-------------------	-----	------------------

1A	Samantha Runyon	Fr.	San Diego, Calif.
1B	Geena Peyton	Fr.	Chicago, Ill.
2	Allison DeCicco	Fr.	Windemere, Fla.
3	Maddy Johnson	Jr.	Yorba Linda, Calif.
4	Brennan Marczewski	Sr.	Killingworth, Conn.
5	Megan Belliveau	Jr.	Madison, Conn.
6	Allyson Bakos	Sr.	Los Altos, Calif.
7	Maddy Goodell	Jr.	Costa Mesa, Calif.
8	Erin McGeoy	Jr.	Santa Barbara, Calif.
9	Jacqueline Bywater	Jr.	Riverside, Calif.
10	Ally Jochim	Fr.	Laguna Beach, Calif.
12	Scarlett Hallahan	Jr.	San Diego, Calif.
13	Anya Welch	So.	Westmoorings, Trinidad
14	Emma Shaffer	Fr.	Pittsburgh, Pa.
15	Maggie Ball	Jr.	Saratoga, Calif.
18	Kira Bruno	Fr.	La Jolla, Calif.

Hartwick College

Head Coach: Alan Huckins

1	Emma Aleksandrovic	Fr.	Belgrade, Serbia
1A	Josette Santos	Jr.	Huntington Beach, Calif.
1B	Sabrina Hartwell	So.	Ann Arbor, Mich.
2	Lena Kotanchyan	Fr.	Moscow, Russia
3	Lauren Brennan	Jr.	Canberra, Australia
4	Tori Wilson	Fr.	Kitchener, Ontario
5	Sarah Lewis	So.	La Jolla, Calif.
6	Natalie May	Jr.	Huntington Beach, Calif.
7	Maryanna Antoniou	Fr.	Glyfada, Greece
8	Katie McKenty	Jr.	Auckland, New Zealand
9	Nicolina Mihajlovik	Jr.	Mississauga, Ontario
10	Charlotte Cottle	Jr.	Blakehurst, Australia
11	Maria Moya	So.	Madrid, Spain
12	L.J. Edwards	So.	Encinitas, Calif.
13	Zsofia Polak	Sr.	Dunaujvaros, Hungary
14	Becca Lelles	Fr.	Boulder City, Nev.
15	Madison Germuska	Fr.	Encinitas, Calif.
16	Edra Colbeck	Fr.	Seattle, Wash.
17	Gina Grauer	Fr.	West Lawn, Pa.
18	Hayley Hill	Fr.	Fort Lauderdale, Fla.
19	Hannah Erbe Smith	Fr.	San Diego, Calif.
20	Ashley Madrigal-Geary	Fr.	Sacramento, Calif.
21	Kristy Walker	Sr.	Mendon, N.Y.

Harvard University

Head Coach: Ted Minnis

1	Cleo Harrington	Jr.	Costa Mesa, Calif.
1A	Sam Acker	So.	Palo Alto, Calif.
3	Sofia Carrera-Justiz	Fr.	Coral Gables, Fla.
4	Angie Varona	Fr.	Miami, Fla.
5	Zoe Osborne	Sr.	Okotoks, Alberta
7	Eela Nagaraj	Sr.	Los Altos Hills, Calif.
8	Mathilde Ribordy	Fr.	Quebec City, Quebec
9	Julie Harrison	Fr.	Huntington Beach, Calif.
10	Michelle Martinelli	Sr.	San Diego, Calif.
11	Sam Strutner	Jr.	Redwood City, Calif.
13	Kristen Hong	So.	Orinda, Calif.
14	Lana Gorlinski	Fr.	Santa Ana, Calif.
15	Haley Bowe	So.	Irvine, Calif.

Indiana University

Head Coach: Ryan Castle

1	Jessica Gaudreault	Jr.	Ottawa, Ontario
1A	Davis Simmons	Fr.	Mercer Island, Wash.
3	Kendall Doten	Fr.	Davis, Calif.
4	Gillian Gatecliff	Fr.	Ann Arbor, Mich.
5	Mollie Williams	Fr.	Sydney, Australia
6	Jennifer Beadle	Jr.	Pleasanton, Calif.
7	Emily Powell	Fr.	Brisbane, Australia
8	Mackenzie Rosenthal	So.	Saratoga, Calif.
9	Sarah Myers	Jr.	Toronto, Ontario
10	Kelly Matthews	Jr.	Roxboro, Quebec
11	Joelle Nacouzi	Fr.	Montreal, Quebec
12	Emily Lowe	Jr.	Orlando, Fla.
14	Megan Abarta	Fr.	Simi Valley, Calif.
17	Riley Beemer	Fr.	Ann Arbor, Mich.
18	Karrie Kozokar	So.	Mundelein, Ill.
20	Bronwyn Smith	Sr.	Harleysville, Pa.
22	Sarah Young	Jr.	San Diego, Calif.

Princeton University

Head Coach: Luis Nicolao

1	Ashleigh Johnson	Sr.	Miami, Fla.
1A	Kasey Bersh	Fr.	Marco Island, Fla.
2	Chelsea Johnson	Jr.	Miami, Fla.
3	Haley Wan	Jr.	Irvine, Calif.
4	Sydney Cheong	Jr.	Los Angeles, Calif.
5	Tatum Turetzky	Fr.	Walnut Creek, Calif.
6	Natalie Grayson	Fr.	La Jolla, Calif.
7	Maddy Damato	Fr.	Mission Viejo, Calif.
8	Hannah Lapkin	Sr.	Tustin, Calif.
9	Morgan Hallock	Sr.	Westlake Village, Calif.
10	Eliza Britt	So.	Newport Beach, Calif.
11	Charlotte Valentine	So.	Orakei, New Zealand
12	Amy Castellano	Fr.	Yorba Linda, Calif.
13	Abbey Blake	Fr.	Seal Beach, Calif.
14	Sydney Saxe	Sr.	Laguna Beach, Calif.
18	Lindsey Kelleher	So.	South Pasadena, Calif.

Saint Francis University

Head Coach: Pat Beemer

1	Kate Wilke	Fr.	Burbank, Calif.
2	Argentina Bonilla	Jr.	Los Angeles, Calif.
4	Aimee Baur	Fr.	North Wales, Pa.
5	Kelly Fehr	Fr.	Erie, Pa.
6	Melani Aghazarian	Jr.	Glendale, Calif.
7	Shelby Sanko	So.	McAdoo, Pa.
8	Lani Merrill	Jr.	San Clemente, Calif.
9	Kelsey Gring	Fr.	Sinking Spring, Pa.
10	Kaitlyn Nguyen	So.	Annandale, Va.
11	Krysta Ponek	So.	Panama City Beach, Fla.
12	Emily Wickenheiser	Fr.	Mechanicsburg, Pa.
13	Cecilia Garza	So.	Round Rock, Texas
14	Missy McCreary	Jr.	Altadena, Calif.
17	Amber Rogers	Fr.	Souderton, Pa.
18	Erin O'Neill	Fr.	Lansdale, Pa.

University of Michigan

Head Coach: Dr. Marcelo Leonardi

1	Emily Browning	Sr.	Lake Forest, Calif.
1A	Cameron Cordial	Fr.	Long Beach, Calif.
1B	Heidi Ritner	Fr.	Newport Beach, Calif.
2	Christina O'Beck	Jr.	Newport Beach, Calif.

3	Maddy Steere	Fr.	Pascoe Vale, Australia
4	Kimberly Graziano	Sr.	Ann Arbor, Mich.
5	Heidi Moreland	Sr.	La Jolla, Calif.
6	Caroline Anderson	Jr.	Palo Alto, Calif.
7	Delaney Cleveland	So.	Huntington Beach, Calif.
8	Sami Pratt	So.	Newport Beach, Calif.
9	Kaitlyn Cozens	Sr.	Sacramento, Calif.
10	Allison Skaggs	Sr.	Lake Forest, Calif.
11	Danielle Johnson	Sr.	Walnut Creek, Calif.
12	Julia Sellers	So.	Santa Ana, Calif.
13	Laura Jimenez	Jr.	Commerce, Calif.
14	Rachel Sodokoff	Fr.	Greenwich, Conn.
15	Skyler Pyle	Fr.	Long Beach, Calif.
16	Genevieve Curry	Fr.	Oak Park, Ill.
17	Alex Corbett	Fr.	Sydney, Australia
20	Kim Johnson	So.	Walnut Creek, Calif.
21	Arija Walsh	Fr.	Mainesville, Ohio

DIVISION III

Carthage College

Head Coach: Laura Coffman

1	Emma Jeronimus	Fr.	Hoffman Estates, Ill.
2	Lauren Patt	Fr.	Skokie, Ill.
3	Carly Strass	Sr.	Western Springs, Ill.
4	Elyssa Hawkins	Jr.	Clarendon Hills, Ill.
5	Malea Fischer	So.	Crest Hill, Ill.
6	Maggie Hennigan	Fr.	Chicago, Ill.
7	Amy Blencowe	Fr.	Naperville, Ill.
8	Allie Booth	Jr.	Wauconda, Ill.
9	Maddie Gronset	Sr.	Trout Valley, Ill.
10	Mack Ryan	Jr.	Libertyville, Ill.
11	Laura Larsen	Sr.	Buffalo Grove, Ill.
12	Jocelyne Sanchez	So.	Cicero, Ill.
13	Jane Eckles	So.	Merced, Calif.
14	Jessica Graziano	So.	Arlington Heights, Ill.
15	Morgan Levy	So.	Vernon Hills, Ill.
16	Heather Walker	Fr.	Chicago, Ill.
17	Morgan Fingerson	Fr.	San Diego, Calif.
18	Madi Anderson	Fr.	Napa, Calif.

Connecticut College

Head Coach: Matt Anderson

1	Sarah Sovia	Sr.	Pottstown, Pa.
2	Shannon Cry	Jr.	Monterey, Calif.
4	Ashley Fitch	So.	Deerfield, Mass.
5	Sarah Nappo	Jr.	Portland, Maine
6	Ginny McCool	Fr.	Gulf Stream, Fla.
7	Kaitlin Reagan	Fr.	Saratoga, Calif.
8	Paige Cackovic	Jr.	New Albany, Ohio
9	Hannah Rogers	Fr.	Kingston, Pa.
11	Sophia Soriano	Jr.	Summerland, Calif.
12	Elaine Dealy	Fr.	Pawling, N.Y.
13	Peri Hummel	So.	Middlebury, Conn.
14	April Anderson	Jr.	Mill Valley, Calif.
16	Brianna Harry	Sr.	Jeffersonville, Pa.

Grove City College

Head Coach: Alyssa Hunt

1	Mary Frank	Sr.	Centreville, Md.
2	Grace Klimek	Sr.	Oakdale, Pa.
3	Katrina Rish	Fr.	Grantville, Pa.
4	Abby Spicher	So.	Erie, Pa.

5	Elizabeth Andrews	Fr.	Newberg, Ore.
6	Heidi Schmidt	So.	Pittsburgh, Pa.
7	Maggie Blume	Jr.	Chicago, Ill.
8	Jillian Breckenridge	So.	Dunellen, N.J.
9	Rachel Blasdel	So.	Leesburg, Va.
10	Brynna Bartlett	Jr.	Olive Branch, Miss.
11	Sonni Kiefer	So.	Sinking Spring, Pa.
12	Carolyn Ebel	Jr.	East McKeesport, Pa.
15	Leona Bently	Fr.	Powell, Ohio
17	Abby Jank	Sr.	Worthington, Ohio

Macalester College

Head Coach: Scott Reed

1	Courtney Overland	So.	Honolulu, Hawaii
2	Liz Kelleher	Sr.	Piedmont, Calif.
3	Brooke Finney	Jr.	Jenson, Mich.
5	Jenny Granston	Fr.	Boulder, Colo.
6	Lucille Moran	So.	Ann Arbor, Mich.
7	Oriana Galasso	Fr.	Gresham, Ore.
8	Cara Mullery	Fr.	Palmetto Bay, Fla.
9	Naomi Strait	Fr.	Beaverton, Ore.
11	Natalie Hoffman	So.	Seattle, Wash.

Monmouth College

Head Coach: Peter Ollis

1	Natalie Curtis	Jr.	Arlington Heights, Ill.
2	Brenna Bowers	Jr.	New Lenox, Ill.
3	Melissa Barrios	Jr.	Oak Forest, Ill.
4	Emily Mathews	Fr.	Flossmoore, Ill.
5	Esther Hubbard	Fr.	Sandy, Ore.
6	Sarah Wright	So.	McHenry, Ill.
8	Becca Dabrowski	So.	McHenry, Ill.
13	Brittany Lira	Fr.	Midlothian, Ill.
19	Rachel Unger	Jr.	Lockport, Ill.
21	Carlyn Clarke	So.	New Lenox, Ill.

Penn State Erie, The Behrend College

Head Coach: Joe Tristan

1	Kara Stegmann	Sr.	Harleysville, Pa.
---	---------------	-----	-------------------

1A	Hollyrae Hanson	Fr.	Rancho Cucamonga, Calif.
5	Alison McClure	Fr.	Loveland, Ohio
6	Clare Jefferys	So.	Erie, Pa.
7	Kristin Owens	Sr.	Erie, Pa.
9	Lauren Wood	So.	Vernon Hills, Ill.
11	Colleen Abanico	Fr.	Mitilani, Hawaii
13	Jenessa Islas-Parker	Fr.	Palatine, Ill.
15	Brittany Pinter	Sr.	Erie, Pa.
16	Allie Schneider	Sr.	Erie, Pa.
18	Maryn Horn	Jr.	Houston, Texas

Utica College

Head Coach: Erin Knight

1	Michalyn Winkler	So.	Barto, Pa.
2	Rebecca Merrill	Fr.	Chelmsford, Mass.
3	Daniella Hannah	Fr.	Dalton, Georgia
4	Domenica Risucci	Jr.	Utica, N.Y.
5	Aisha Kelly	So.	Ambler, Pa.
6	Ashley Flint	Fr.	Whitesboro, N.Y.
7	Lara McNamara	So.	Yonkers, N.Y.
8	Meagan Stanon	Jr.	Chemung, N.Y.
15	Hnyla Sloan	So.	Perkasie, Pa.
17	Krystiana Rehrig	Jr.	Pennsburg, Pa.
19	Emily Czerwonka	Fr.	Souderton, Pa.

Washington & Jefferson College

Head Coach: Cassie Wyckoff

1/13	Ally Hopkins	Sr.	Sinking Spring, Pa.
1A	Frances Sinclair	Fr.	Thousand Oaks, Calif.
2	Sarah Latzo	Sr.	Erie, Pa.
3	Kristen Yatsko	So.	King of Prussia, Pa.
4	Amanda Borwegen	So.	Mechanicsburg, Pa.
5	Chloe Magyari	Fr.	Columbus, Ohio
9	Madison Nervig	Sr.	Naperville, Ill.
10	Lexie Gartner	Jr.	West Lawn, Pa.
11	Macel Reising	Jr.	Annapolis, Md.
16	Tess O'Neill	Sr.	Hatfield, Pa.
17	Brittany Patterson	Sr.	North Wales, Pa.
20	Paige Adams	Fr.	Mohnton, Pa.
22	Liz Klock	Jr.	New Lennox, Ill.

CWPA CLUB TEAM ROSTERS

ATLANTIC DIVISION

Duke University

- 1 Ashley Marko
- 3 Brianna Walker
- 4 Kim Carlomagno
- 5 Abigail Chambers
- 6 Katherine Vayda
- 7 Megan Smith
- 9 Caroline del Real
- 10 Tess McCloud
- 11 Sarah Luksik
- 15 Sarah McDonnell
- 16 Fangge Deng
- 18 Carly Pardo

James Madison University

- Alt. Theresa Berg
- Alt. Sophia Brown
- Alt. Justine Chester
- Alt. Megan Enneking
- Alt. Alexa Fagan
- Alt. Caris Giessler
- Alt. Courtney Hermes
- Alt. Lindsey Hunter
- Alt. Olivia Kaplan
- Alt. Amanda Kousen
- Alt. Amber Morris
- Alt. Christine Mountain
- Alt. Molly Neilan
- Alt. Kathryn Nielsen
- Alt. Madeline Roewer
- Alt. Madailine St. Ledger
- Alt. Olivia Stephens
- Alt. Katelyn Villani
- Alt. Cassidy Welch
- Alt. Madeline Winkeler

The University of North Carolina

- 2 Sara Siemens
- 3 Kylie Lawrence
- 4 Gabrielle McArdle
- 7 Lauren Smith
- 8 Briana Fletcher
- 9 Deanna Milunas
- 10 Olivia Browning
- 12 Elizabeth Kamai
- 13 Elaine King
- 14 Natasha Kisiluk
- 15 Meg Fletcher
- 16 Jennifer Xu
- 21 Savanah Edwards
- 23 Evelyn Morris
- 24 Chani Hodonsky

University of Virginia

- 1 Caroline Harvey
- 2 Jessica Martin
- 3 Austin Walker
- 4 Mary Talkington
- 5 Emma Chamberlayne
- 6 Angie Kim
- 7 Agni Stavrinaky
- 8 Ellen Beauchemin
- 9 Caitlen Moser
- 10 Maddie Williamson
- 11 Olivia Sheffer
- 12 Laura Griffin
- 13 Keziah Higginbottom
- 14 Katherine Pajewski
- 15 Madeleine Keach
- 16 Savannah Morris
- 17 Maggie O'Toole
- 18 Kelly Rohrer
- 19 Adele Young
- 20 Emily Hybl
- 21 Jessica Fairly
- 22 Caroline O'Keefe
- 23 Erica Comm
- Alt. Lauren Ainsley
- Alt. Stasi Gustaven

Virginia Poly. Institute & State University

Roster not available

BIG TEN DIVISION

Indiana University

- 1 Abbey Early
- 2 Anabelle Cloutier
- 3 Angie Ramero
- 4 Julia Cohen
- 5 Kristen Bagley
- 6 Natalie Williams
- 7 Nicole LaRue
- 8 Porter Carlson
- 9 Emily Rigopoulos
- 10 Sam Klosak
- 11 Siobhan Murphy

Michigan State University

- 2 Julianna Todd
- 3 Em McCullough
- 4 Jilian Eiken
- 5 Ryann Scherdt
- 6 Meredith McKeown
- 7 Erin Leestma
- 8 Maya Arsneault
- 9 Maddy Irwin
- 10 Caitlin McCully

- 11 Mackenzie Kryska
- 12 Carly Seeterlin
- 13 Melissa Vesey
- 14 Callie Swan
- 15 Taylor Stensen
- 16 Julia White
- 17 Sarah Daugherty
- 18 Molly Schools
- 19 Lauren Mohr
- 20 Kathryn Bliden
- 21 Evie Walper
- 22 Lindsay Baywol
- 23 Mackenzie Locke
- 24 Sophia Giurini
- 25 Abby Parsons
- 26 Emerson Feddor
- 27 Courtney Kessler
- 28 Alexa Fabrizio
- 29 Emily Osika
- 30 Anna Kennedy
- Alt. Lauren Lomonoco

Purdue University

- 1 Sydney Bernadel
- 2 Rachel Enright
- 3 Catherine Carroll
- 4 Maggie Frazier
- 5 Autumn Hoang
- 6 Bella Rojas
- 7 Analiese Long
- 8 Lily Newton
- 9 Mikaela Hand
- 10 Jess Sacksteder
- 11 Sam Holzschu
- 13 Mary Cianchetti
- 14 Hannah Hawrot
- 16 Michaela Hagler
- 18 Kate Eastman
- 20 Sarah Pushis
- 21 Sara Hosea

The Ohio State University

- 1 Angela Barnes
- 2 Megan Wolf
- 3 Betsy Trace
- 4 Laura Seidel
- 5 Amanda Morgan
- 6 Maddie Franzoni
- 7 Sara McTigue
- 8 Rita Chen
- 9 Karen David
- 10 Katie Caldwell
- 11 Brittney Coblentz
- 12 Maddie Nurre
- 13 Taylor Brokamp
- 14 Beth Raiff
- 15 Aidan Hartsell
- 16 Julia Fletcher

- 17 Taylor Leach
- 18 Jory Gould
- Alt. Rachael Carlen
- Alt. Katie Cook
- Alt. Lauren DeAngelis
- Alt. Rachael Farber
- Alt. Anna Grimes
- Alt. Ashley Honore
- Alt. Danielle Kimmet
- Alt. Audry Klossner
- Alt. Madeleine Mears
- Alt. Allie Schroeder
- Alt. Kaitlyn Schlueter
- Alt. Corinne Taylor
- Alt. Noelle Tibbetts
- Alt. Paige Torbet

University of Illinois

- 1 December Fagen
- 1A Kate MacDuff
- 1B Keelin Frank

- 2 Katherine Rogers
- 3 Shea Smith
- 4 Maddi Steiner
- 5 Haley Hughes
- 6 Amanda Fulk
- 7 Erin Yang
- 8 Mary Schiavone
- 9 Juliana Isayeve
- 10 Megan Murtaugh
- 11 Kim Bernhard

- 12 Nydia Garza
- 13 Kim Bello
- 14 Kat Dobrowski
- 15 Oksana Batryn
- 16 Becca Kasner
- 17 Sophia Kim
- 18 Laura Foss
- 19 Emily Schiavone
- 20 Rachel Ellingson
- 21 Joanie Newland
- 22 Ale Izquierdo
- 23 Fairie Hughes
- 24 Karolina Maniewski
- 25 Naomi Willis
- 26 Nikki Burdyn
- 27 Alana Dean
- Alt. Lauren Engelhard

University of Iowa

- 1 Jessica Wittenberg
- 1A Alexandra Vick
- 2 Gabby Chelette
- 3 Ally Cortez
- 4 Carli York
- 5 Gena Tanquilut
- 6 Kim Durkin
- 7 Kristine Pinter

- 8 Zoe Krantz
- 9 Alexis Anderson
- 10 Amy Kopale
- 11 Liz Kruse
- 12 Alli Krick
- 14 Frankie Delleman
- 16 Ari Marban
- 17 Emily Schwandner
- 18 Carley Stewart
- 19 Rebecca Robinson
- 20 Mara O'Connor

University of Michigan "A"

- 1 Laura Bonebrake
- 1A Alexandra Lubczuk
- 2 Desiree Cougill
- 3 Hebe Clarke
- 4 Megan Takahashi
- 5 Becca Ford
- 6 Rachael Chait
- 7 Amy Finkel
- 8 Madison Ellsworth
- 9 Reagan Maisch
- 10 Hannah Caywood
- 11 Claire Drebin
- 12 Julia Riemersma
- 13 Claire Bartosic
- 14 Patricia Simmer
- 15 Hannah Cole
- 16 Lehna Smallwood
- 17 Grace Cole
- 18 Anna Topping
- 19 Harley Johnson
- 20 Alyssa Michaud
- 21 Erica Tokirio
- 22 Emma Sutherland
- 23 Hannah Michelakis
- 24 Alina Drebin
- 25 Molly Pomeroy
- 26 Kevan Casson
- Alt. Sam Gould
- Alt. Alyssa Kalsbeek
- Alt. Emily Lerner
- Alt. Madeline Martin
- Alt. Radhika Ranganathan
- Alt. Catherine Schertzing
- Alt. Katherine Thorne
- Alt. Paige Wiersema
- Alt. Hunter Wojtas
- Alt. Veronica Woods

University of Michigan "B"

Roster not available

University of Wisconsin

- 2 Melaney Van Spankeren
- 6 Emily Roll
- 8 Mathilde Mogensen
- 9 Delaney Heffner
- 11 Amanda Kent
- 12 Katie Koenig
- 13 Katie Ullery
- 14 Megan McClement
- 17 Holly Wegener

- 18 Alison Schulenberg
- 20 Bryn Baffer
- 22 Breanna Grady
- 23 Jessica Westcott
- Alt. Kira Chavez
- Alt. Elise Drott
- Alt. Emma Hirt
- Alt. Rachel Privett
- Alt. Chloe Wallschlaeger

HEARTLAND DIVISION

Carleton College

Roster not available

Grinnell College

- Alt. Ashley Alto
- Alt. Chloe Briney
- Alt. Shannon Ellery
- Alt. Eve Galen
- Alt. Taylor Hurney
- Alt. Helena Kleiner
- Alt. Carolyn Lorch
- Alt. Haley O'Neil
- Alt. Ana Pulak
- Alt. Beth Tsuha
- Alt. Maria Venerri

Knox College

- 1 Clarice Bernett
- 2 Nefeli Chrysoula
- 3 Julia Steen
- 4 Elena Iatropoulou
- 5 Sylvia Bowen-Bailey
- 6 Melissa Wood
- 7 Michel Mora
- 8 Jessica Chrzan
- 9 Emma Newman
- 10 Laura Lee
- 11 Irene Stephenson

Saint Mary's University (Minn.)

Roster not available

Washington University in Saint Louis (Mo.)

- 1 Isabelle Trier
- 1A Nicole Lashley-Simms
- 2 Hayley Clocksin
- 3 Nicole Lashley-Simms
- 4 Becky Bavlsik
- 5 Olivia Murray
- 6 Jennie Greenstein
- 7 Paige Coughlin
- 8 Natalie Goldman
- 9 Erin Darnauer
- 10 Kelsey Barter
- 11 Michelle Pacheco
- 12 Anne Wampler
- 13 Christina Krucylak
- 14 Maddie King
- 15 Sydney Dybing
- 16 Grace Tedder
- 17 Sabina Maniak
- 18 Aidan Lisker
- Alt. Sammy Bale
- Alt. Maggie Brown
- Alt. Eva Jeliaskova
- Alt. Helen Miles
- Alt. Vivian Ouyang

MID-ATLANTIC DIVISION

Carnegie Mellon University

- 1 Karen Segal
- 1A Alyssa Deng
- 2 Sofia Zayas
- 3 Maya Holay
- 4 Jen Swoyer
- 5 Samantha Wang
- 6 Miranda Mlincek
- 7 Jessica Kwon
- 8 Aru Rajeevan
- 9 Jordan Cox
- 10 Rachel Yanovsky
- 11 Cari Hartigan
- 12 Sarah Kwan

- 13 Ophelie Tousignant
- 14 Sage Yort
- 15 Zhuri Solan
- 16 Tala Habbab
- 17 Kira Vargas
- 18 Akari Kumagai
- 19 Michelle Wu
- 20 Grace Dzina

Ohio University

- 1/4 Erin Seymour
- 2 Kaitlin Alzapiedi
- 5 Macy Cummings
- 6 Erica Seigel
- 8 Caitlin Severance
- 9 Sara Nolan
- 10 Alyse Cory
- 11 Elizabeth Bryan
- 12 Chelsea Sick
- 13 Nora Dovishaw
- 14 Heather Montgomery
- 15 Sydney Connor
- 16 Nichole O'Connell
- 18 Caitlin Moore

The Pennsylvania State University

- 1 Amy Frey
- 1A Emily Harding
- 2 Maureen Ansel
- 4 Claire Washabaugh
- 5 Caroline Layden
- 6 Courtney Quinn
- 7 Lexie Saidman
- 8 Emily Argentati
- 9 Sofia Viebranz
- 10 Steph Galetta
- 11 Antonia Jaramillo
- 12 Shannon Quinn
- 13 Margaret Wilson
- 14 Kassidy McCullough
- 15 Sarah Anderson
- 18 Sam Koon
- 19 Megan McWilliams
- 20 Mikayla Masley
- 21 Alex Stickler
- 22 Brooke Rothenberger
- 23 Sarah Koberna
- 24 Michaela Pagano
- 25 Amelia Sisko
- Alt. Cricket Childs
- Alt. Natalie Hoffmann
- Alt. Emily Humes
- Alt. Emily Moyer
- Alt. Emerald Nau
- Alt. Macy Putman
- Alt. Laura Riedlmeier
- Alt. Tara Rogers
- Alt. Ashley Southwick
- Alt. Jill Whitmire

University of Pennsylvania

- 1 Sophia Clark

- 2 Addie Shelley
- 6 Christina Nordrum
- 7 Marianna Olave
- 8 Renee Chin Lee
- 9 Nya Wilkins
- 11 Sara Merican
- 12 Lilly Balla
- 14 Jessica Guzman
- 15 Claire Canestrino
- 19 Lisa Nekrasova
- 20 Jenna Weber
- 21 Olivia Ruiz

University of Pittsburgh

- 1 Abby Jarrett
- 2 Maggie Walker
- 4 Molly Diller
- 6 Genevieve McCarthy
- 7 Leah McCarthy
- 8 Claire Schafer
- 9 Kristie Lin
- 11 Abi Rubio
- 12 Macy Divens
- 13 Samantha Sullivan
- 15 Elizabeth Tcheiguine
- 18 Danielle Hatter
- 20 Margret Mass
- 21 Georgina Laube

West Chester University

Roster not available

MIDWEST DIVISION

Grand Valley State University

- 1 Hannah Heemstra
- 4 Megan Carr
- 5 Nikita Netjes
- 6 Brittany Spencer
- 7 Erika Iwatsu
- 11 Murielle Garbarino
- 14 Kara Vandawater
- 15 Kelsey L'Heureux
- 16 Taylor Kehren
- 20 Caitlin McHugh
- 23 Brynn Rohloff
- 24 Britney Ledger
- 28 Jessica Hinderer

Illinois State University

- 1 Caitlin Byrd
- 2 Julia Gramont
- 3 Lizzie Hardt
- 4 Stephanie Torres
- 5 Emily Sowa
- 6 Mary June O'Connell
- 8 Sara Ploch
- 9 Katarina Mraz
- 10 Nadia Pantaleon
- 11 Bridget Soukup
- 12 Josie Ehlbeck

- 14 Paige Adelman
- 15 Reina Razo
- 16 Megan McCabe
- 17 Christina Spizzirri
- 19 Shannon Soukup

Lindenwood University

- 1/14 Dani Rust
- 2 Laia Pons
- 3 Claire Ulrich
- 4 Michal Andreatta
- 5 Drew L'Ecuier
- 6 Delaney Simmons
- 7 Amber Inouye
- 8 Abby Conner
- 9 Quincy Winship
- 10 Vladislava Milutinovic
- 11 Sarah Rodriguez
- 17 Tiffany Rodriguez
- 19 Heather Rosson
- 20 Abby VerMeer

McKendree University

- 1 Gabby Madewell
- 2 Colleen Lischwe
- 3 Victoria Jones
- 4 Brianna Mullalloy
- 5 Jillian Hoffman
- 6 Tiana Wilson
- 7 Kate Eckert
- 10 Valerie Sorondo
- 12 Sabrina Sherrin
- 13 Grace Coplin
- 16 Catie Young

Miami University (Ohio)

- 1A Taylor Iliff
- 2 Keira Hassel
- 3 Erica Whaley
- 7 Kara Sethna
- 8 Paige Wieser
- 9 Marcella Cerra
- 11 Alexandria Doty
- 12 Katie Flaherty
- 17 Lindsay Wantuck

Saint Louis University

- 1 Allison Ney
- 2 Anna Sullivan
- 3 Annie Picchiotti
- 4 Jahnavi Modi
- 5 Maura Ryan
- 6 Katie Bell
- 7 Tara White
- 8 Annika Hotchkiss
- 9 Margaret Schneider
- 10 Antonia Franco
- 11 Lara Derrig
- 12 Mary Ann Crosetto
- 13 Clarissa LaVasseur
- 14 Nora Plank

University of Cincinnati

- 1 Anna Condron

- 2 Katie Locasto
- 3 Caitlin Shea
- 4 Ava Oelrich
- 5 Gillian Watson
- 6 Sam Stewart
- 7 Olivia Bunton
- 8 Kate Ducey
- 9 Elizabeth Guye
- 10 Alyson Korston
- 11 Allison Wait
- 14 Carolyn Storch
- 18 Lindsay Combs

University of Notre Dame

- 1 Caley Martinez
- 1A Emily Dufner
- 2 Kelly Fricke
- 3 Mary McKinley
- 4 Kelly Wentland
- 5 Clare Durkin
- 6 Katie Cullinan
- 7 Kristin Cullinan
- 8 Victoria Devine
- 9 Samantha Henze
- 10 Mary Glass
- 12 Rosie Wisniewski
- 13 Nicole Degla
- 14 Ann Iverson
- 15 Allison Pieroni
- 16 Erica Evans
- 18 Amanda Moriarty
- 21 Emily Dufner
- 23 Andrea Solis

NEW ENGLAND DIVISION

Boston College

- 1 Amanda Bolanños
- 1A Mary Holt
- 2 Michaela Santillo
- 3 Lynsey Kirby
- 4 Heath Clark
- 5 Molly Hunt
- 6 Rosie Reilly
- 7 Eliza Gross
- 8 Michelle Krameisen
- 9 Kate Hohne
- 10 Hailey Morse
- 11 Elizabeth Judge
- 13 Margaret Xing
- 14 Caroline Cook
- 15 Amanda Matthiessen
- 17 Brigid O'Donoghue
- 18 Beth Dougherty

Boston University

- 1 Varsha Srivastava
- 1A Megan Davis
- 2 Maddie Thomas
- 3 Madie Janik
- 4 Lindsey Stevens

- 5 Victoria Frick
- 6 Ashley Reischman
- 7 Mary Economy
- 8 Adrienne Ingalla
- 9 Sarah Araujo
- 10 Cat Xenakis
- 11 Allie DeLillo
- 12 Venus Law
- 13 Pure Maleenont
- 15 Mia Kato
- 16 Steph Borgestein
- 17 Allison Durkan
- 18 Macella Molenari
- 19 Jillian Rausa
- 20 Alison Nichols
- 21 Camilla Stejskal
- 22 Mary Cerkvenik
- 23 Sabrina Reilly
- 24 Meaghan Sylver

Dartmouth College

- 1 Adina Harri
- 2 Meghan Christie
- 4 Emily Chao
- 8 Aleena Vigoda
- 9 Katherine Flessel
- 10 Abby Reynolds
- 11 Emma Sklarin
- 12 Jessie Jones
- 13 PJ Bigley
- 14 Natalie Mueller
- 16 Hilda Friday
- 17 Emily Robertson
- 19 Hallie Huffaker

Middlebury College

- 3 Joslyn Sullivan
- 5 Alaina Pribis
- 6 Kate Claman
- 7 Emily Bustard
- 11 Julie Ehrlich
- 12 Emily Lewkowicz
- 17 Rebecca Lightman
- 19 Katie Corrigan

Northeastern University

- 1 Megan Stoyanovich
- 2 Sarah Schmidt
- 3 Beth Cohen
- 4 Samantha Greig
- 5 Kaitlin Bindert
- 6 Adrienne Peng
- 7 Montana Klingensmith
- 8 Taliza Sanchez
- 9 Anais Simeral
- 10 Meredith Stone
- 11 Rebecca Sudworth
- 12 Cassandra Valas
- 13 Carolina Vargas
- 14 Emma Viveiros
- 15 Claire Ward
- 16 Meghan Zwicker
- 17 Sofia Bergmann
- 18 Glenn Billman

19 Emily Eastman

University of Massachusetts

1 Natalie Hansel
2 Alison Lie
3 Katie Lavery
4 Rachel Haley
5 Allison Yelgin
6 Nadia Reytselis
7 Caroline Hultin
8 Jessica-Sophie Horoschak
9 Corinna Torabi
10 Ashley Toebe
11 Michaela Savran
12 Steph Ryan
13 Pauline Auger

Wesleyan University

1 Fallon Konow
1A/8 Devon Cooper
2 Z Kerrich
3 Amelie Jo
4 Naomi Scharlin
5 Kylie Han
6 Avery Kaplan
7 Sophia Antonio
9 Erin Angell
10 Bella Weiner
11 Stajz Saar
12 Leah Cravitz
13 Kathleen Lynch
14 Corinne Noonan
15 Danielle Krieger
16 Lauren Conte
17 Alexa Code
18 Claire Coyle
19 Maela Whitcomb
20 Caroline Murphy
21 Grace Middleton
22 Hannah O'Halloran
23 Emmy Hughes
24 Livia Wallick
25 Anna Oakes

Williams College

1 Katie Flaharty
2 Izzy Carr
3 Emily Bannigan
4 Susan Wu
5 Jamie Lesser
6 Hannah Goodrick
7 Marianna Frey
8 Caroline Wyatt
9 Tamar Aizenberg
10 Eleanor Johnston
11 Alia Richardson
12 Jesse Facey
13 Claire Bunn
14 Grace Murray
15 Caroline Ryan
16 Caleigh Forbes-Cockell
17 Angela Chang

NEW YORK DIVISION

Colgate University

1 Taylor Dawson
2 Olivia Miller
3 Ha Vu
4 Jaime Ransohoff
5 Kathryn Steklac
6 Alisia Zhang
7 Karrie Spychalski
8 Emma Newton
9 Maggie Dunn
10 Tess Nogles
11 Jessica Cauley
12 Alexandra Krez
13 Sonia Ost
14 Maeve DeFronzo
15 Emily Huff
16 Alexandra Newlon
17 Taylor Atkin
18 Morgan Desautelle
19 Jordan Tockstein
20 Madison Jozefiak
21 Yanjun Gong

Columbia University

1 Stephanie Norwood
1A Clara Benioff
3 Sarah Wang
4 Maryann Verghese
5 Ruthie Kornblatt-Stier
6 Nellie Spektor
7 Elektra Williams
9 Clara Benioff
11 Hannele Jane
12 Stephanie Norwood
13 Amy Gong Liu
15 Sarah Yukiko Klena
16 Dora Palmer
17 Delia Bullock
18 Maia Cattani
Alt. Carla Bezjian
Alt. Shoshana Edelman
Alt. Harmony Graziano
Alt. Meg McCabe
Alt. Caroline Montgomery
Alt. Jenna Scalmanini

Cornell University

2 Julia Li
3 Maura Coughlin
4 Madison Burachio
5 Michelle de Leon
6 Cassandra Benson
7 Lyra Liu
9 Shayna Barnes
10 Maya Kumaran
11 Kendall Bixler
12 Amy Morrison
18 Carolina Duque

New York University

Roster not available

Syracuse University

1 Fallon Siegler
2 Meredith Conway
3 Angelina Espino
5 Brittany Ortiz
8 Jamie Waxman
10 Gaby Wemple
11 Jess Hume
13 Angela Rookey
14 Brittany Muller
17 Melissa Rule

NORTH ATLANTIC DIVISION

Bates College

1 Amelia Green
2 Sam Tyler
3 Ashley Kulesza
4 Deveena Banerjee
5 Kiria Borak
6 Catherine Mullen
7 Shelby Radar
8 Priyanka Takle
9 Caroline Mitchell
10 Lucy Faust
11 Hope Logan
12 Anna Sucsy
Alt. Caty Casaz
Alt. Julie Hinton
Alt. Madeline Moberg
Alt. Meg Robinson

Bowdoin College

1 Isabel Schwartz
2 Erin Houlihan
3 Ellie Quenzer
4 Karla Olivares
5 Kiki Nakamura-Koyama
6 Liza Tarbell
7 Linnea Patterson
8 Katie Paris
9 Sara Baronsky
10 Molly Foley
11 Maisie Campbell
12 Caitlin Loi
13 Cecile Roche
14 Claire Carges
15 Jhadha King
16 Katherine Bacall
17 Kathleen Foley

Massachusetts Institute of Technology

1 Vivian Zhang
2 Emily Malison
3 Madeleine Severance
4 Judit Francesch

5 Cecilia Viggiano
6 Sarah Wilson
7 Alexis Jones
8 Sarah Fay
9 Rio Lavigne
10 Hayley Bergman
11 Leilani Gilpin
12 Emma Ferris
13 Sophie Peterson
15 Kate Telma
16 Haley Bergman
17 Lauren TenCate
18 Elise Ledieu
20 Clare Wieland

Tufts University

1 Romy Aboudarham
2 Rica Generoso
3 Maddie Maider
4 Kasey Tamamoto
5 Kathleen Coogan
6 Elise Gan
7 Caroline McCormick
8 Taegan Williams
9 Lily McCarthy
10 Anique Barch
11 Alex Scheman
12 Sophie Anderson
13 Charlotte Leis
14 Emily Grussing
15 Nikki May

University of New England

2 Eleni Bautz
3 Kayla Burgess
4 Jordan Earley
5 Emily Fellows
6 Samantha Hanley
7 Nicole Robitaille
8 Stephanie Pare
9 Lindsey Thomsen
10 Emmie Travers
11 Madison Mahar
12 Kelsey Springer
Alt. Brianna Dumeny
Alt. Alina Mauthe
Alt. Assunta Spinazzola

Wellesley College

1 Rachel Utomo
2 Claire Whitaker
3 Allison Fernandez
4 Maggie Ugelstad
5 Corrine Yoder-Mulkey
6 Kelsey Moran
7 Jordan Street
8 Briana Miller
9 Melissa Loza
10 Hershel Carbajal-Rodriguez
11 Nikki Rodriguez
12 Katina Maria Orive
13 Emma Schwartz
14 Emily Yax

- 15 Nancy Li
- 16 Huihan Li
- 17 Sara Mueller
- 18 Sarah Smith-Tripp
- 19 Jessica Schuyler

Yale University

- 1 Brittany Fitzgerald
- 2 Anna Wujciak
- 3 Jasmine Stone
- 4 Taylor Church
- 5 Genevieve Abele
- 6 Sierra Jackson
- 7 Kimberly Guo
- 8 Willemijn van Deursen
- 9 Brynne Follman
- 10 Katherine Kuenzle
- 11 Eileen Johnson
- 12 Andrea Basaraba
- 14 Alexandra Schluntz
- 15 Alexandra Zafran
- 17 Fiona Asbury

NORTHWEST DIVISION

Oregon State University

Roster not available

Portland State University

- 1 Taylor Morton
- 2 Bryn Hudson
- 3 Emma Frantz
- 4 Raven Downing
- 5 Hannah Jarman-Miller
- 6 Vanessa Rodgers
- 7 Shannon Caley
- 8 Madelyn Lackman
- 9 Alyssa Nguyen
- 10 Gabrielle Rookard
- 11 Hayley Howard
- 12 America Hall
- 13 Brooke Learmouth
- 14 Haley Jones
- 15 Madi McGlone

University of Oregon "A"

- 1 Megan Scott
- 1A Sulley Schuster
- 2 Kathryn Peterson
- 3 Sarah Cudworth
- 4 Izzy Dickerson
- 5 Abbie Howard
- 6 Kimmi Thienes
- 7 Miranda Moore
- 9 Jesse Fiorina
- 10 Emme Van Vorhis
- 11 Leah Coates
- 12 Sophie Gemelas
- 13 Bridget Sheperd
- Alt. Cloe Adams
- Alt. Angelica Avellaneda

- Alt. Isabella Bischel
- Alt. Kacie Bohme
- Alt. Lauren Butler
- Alt. Corinn Canfield
- Alt. Yubin Cho
- Alt. Anne Clingon
- Alt. Kianna Escalante
- Alt. Sesa Ferdun
- Alt. Carissa Fong
- Alt. Sammie Garcia
- Alt. Kate Goldsworthy
- Alt. Madison Hall
- Alt. Katie Hansen
- Alt. Willa Holmes
- Alt. Allison Hoslett
- Alt. Chloe Hubbard
- Alt. Tori Hyham
- Alt. Annie Jarvis
- Alt. CJ Keshap
- Alt. Brittani Lancaster
- Alt. Melanie Lopez
- Alt. Sophie Metzger
- Alt. Rachel Michaels
- Alt. Nicole Milligan
- Alt. Manon Murphy
- Alt. Anna Neufeld
- Alt. Grace Perkins
- Alt. Isabelle Philpott
- Alt. Caroline Pipes
- Alt. Eva Piroth
- Alt. Caroline Richeslen
- Alt. Becca Robinson
- Alt. Erin Sargent
- Alt. Kezia Setyawan
- Alt. Allie Swartz
- Alt. Kate Trauernicht
- Alt. Elena Vega-Fujioka
- Alt. Sierra Webster
- Alt. Kaitlyn Wright

University of Oregon "B"

Roster not available

University of Washington "A" (Wash.)

Roster not available

University of Washington "B" (Wash.)

Roster not available

Western Washington University

- 1 Micalina Abbot
- 3 Caroline Baber
- 4 Daniella Navarro
- 5 Chanel Long
- 6 Madeline Hurd
7. Kirsten Dodge
- 8 Emilija Thorburn
- 12 Samantha Taylor
- 13 Julianna Howe
- 14 Alexandra Watts
- 15 Piper McCarthy

- 16 Katie Mitcheletti
- 17 Mazy Braden
- 18 Sydnie Thompson
- 20 Shaye Fowler
- 21 Emilie Gaston

PACIFIC COAST DIVISION

California Polytechnic State University

- 1 Sierra Sheeper
- 1A Emily Dunlap
- 1B Olivia Bristow
- 2 Taylor Best
- 3 Becca Riley
- 4 Bria Brickman
- 5 Taira Hovden
- 6 Melanie Flores
- 7 Maddie Leber
- 8 Carley Scholz
- 9 Lizzie Wiley
- 10 Claudia Macedo
- 11 Emily Rindermann
- 12 Maddy Pape
- 13 Jessie Smith
- 14 Molly Casey
- 15 Sydney Clark
- 16 Eilish McNulty
- 17 Hope Moseley
- 18 Amy Lewis
- 19 Bailey Setzler
- 20 Hannah Vaughn-Hulbert
- Alt. Hannah Borjon
- Alt. Gabriela Fabri
- Alt. Zoey Fox
- Alt. Sanam Ghazvini
- Alt. Tara Howard
- Alt. Kayla Iles
- Alt. Rebecca Immel
- Alt. Katie Kleis
- Alt. Maya Royle
- Alt. Christa Santos
- Alt. Hannah Sweet

- Alt. Claire Turner
- Alt. Meagan Vail

California State University-Long Beach

- 1 Marti Ray Grois
- 1A Tara Kemp
- 2 Katherine Lopez
- 3 Kayla Borak
- 4 Kadisha Aburub
- 5 Libby Berry
- 6 Adrienne Rossi
- 7 Marrisa Senejas
- 8 Julia Roriz
- 9 Liz Yepez
- 10 Michelle Cruz

University of California- Los Angeles

- 1 Eve McNally
- 1A Karen Chou
- 2 Erin Hollander
- 3 Raina Patel
- 4 JoAnna Yortiss
- 5 Ruby Personius
- 6 Rebecca Campbell
- 7 Carly Messex
- 8 Carney Flinn
- 9 Emma Schopp
- 10 Riley Woolvett
- 11 Natassia Dunn
- 12 Anne Deffebach
- 13 Catherine Barrie
- 14 Samantha Hartman
- 15 Alondra Serrano
- 16 Jacey Chinn
- 17 Mira Grebennik
- 18 Tania Jarjoura
- 19 Maggie Elgin
- 20 Cynthia Garcia
- 21 Emma Gale
- 22 Christine Wiley
- 23 Leslie Dove
- Alt. Janae Anthony
- Alt. Maraide Green

Alt. Rachel Jones
Alt. Josefina Madrigal
Alt. Macie Matlock

University of California-Santa Barbara

1 Erica Weed
1A Alexa Borg
2 Shanna Heller
3 Allison Griffeth
4 Rachel Vaughn-Hulbert
5 Allie Kahler
6 Samantha Mladjov
7 Rea Brakaj
8 Madison Delgado
9 Ann Weber-Bruya
10 Sofia Contreras
11 Lauren Dvonch
12 Alyson Osgood
13 Emma Adams
14 Shannon Grossman
15 Halle Clark
17 Emily Von Gerichten
18 Hope Mayer
19 Karen Thorton
20 Julia Donath
21 Makenna Pugh
29 Korey Dodson
Alt. Rachel Garwick

University of California-Riverside

1/9 Sue Quintana
3 Jordan Watson
4 Marisha Gonzalez Subia
5 Jacinta Ngo
6 Amy Zaragoza
7 Lavin Albertson
8 Alexis Illich
11 Kelly Duarte
12 Vanessa Tello
14 Ashley Hernandez
15 Jessica Naito
16 Daisy Hudson
18 Bri Chew
19 Bri Parham

University of Southern California

1 Salma Syed
2 Shannon Johnson
3 Maxine Kelber
4 Abbey Stepnitz
5 Emma Smith
6 Michela Boarnet
7 Allison Kelly
8 Yen Nguyen
9 Gaby Aghakian
10 Priya Lee
11 Kayla Tilton
12 Logan Silliman
13 Stella Aghakian
14 Elisa Levine

15 Bryndis Klein
16 Elisa Shimada
17 Gabriela Moreno

ROCKY MOUNTAIN DIVISION

United States Air Force Academy "A"

1 Reily Bolton
2 Leanne Trump
3 Sarina Wyrick
5 Katie Brechbuhl
6 Cassie Preston
8 Jordan Schumacher
9 Alanna LoVetri
10 Tasha Blaskovich
11 Shannon Murray
12 Stephanie Slimp
13 Rachel Kester
14 Rosalyn Mikel
15 Beth Abzun
16 Robyn Cully
17 Elle Massar
18 Reagan Fentress
19 Jill Combs
20 Catherine Malone
21 Juanita Londono
22 Emily Kuo
23 Monica Hart
25 Kelly Grier
27 Justina Kim
30 Hannah Rogers
Alt. Laura Wood

United States Air Force Academy "B"

Roster not available

University of Colorado

1 Marina Pulver
1A Cassidy Rippy
2 Madison Schelble
3 Mary Rose Klein
4 Caroline Aemmer
5 Aubrey Krieger
6 Emma Perkins-Johnson
9 Hallie Chuba
10 Samantha Kolsoske
12 Madeleine Morgan
13 Emma Bradley
17 Madison Lampe
22 Hallie Freitas
23 Claire Morrison

University of Denver

1 Kate Pearce
2 Helen Bassett
3 Andrea Gerdes
4 Brinn Busch
5 Gillian Breuer
6 Dana Grad

7 Ashley Dillon
8 Meghan Garrant
9 Riley Witting
10 Yasmeen Nubani
11 Corinna Teague
12 Madalyn Lavezzo
13 Rebekah Kiner
14 Brandy Ledesma
15 Ken Fowler
Alt. Kendyl Kingsley

University of Utah

1 Polly Creveling
2 LeAnn Nguyen
3 Hart Baresco
4 Megan Denney
5 Gabriella Minassian
6 Delaney Candland
7 Amber Baker
8 Alex Walker
9 Jessica Knowles
10 Ashley Collins
11 Catherine Miller
12 Ashley Wilcox
14 Xandra Pryor
18 Leah Beguin

SIERRA PACIFIC DIVISION

California State University-Chico

1 Maddie Deronde
1A Diana Kryukova
1B Bethany Prizant
2 Kelly McCabe
3 Allie Moore

4 Jamie Elliott
5 Shelby Craig
6 Emily Lovato
7 Sammy Elsberry
8 Ally Greer
9 Kayla Belich
10 Madison Blazzard
11 Lauren Wellman
12 Mia Montalbano
13 Jillian Griffin
14 Haley Reimers
15 Cierrah Phelps
16 Clare Messenger
17 Meghan Shellooe
19 Kristen Zamora
20 Julia Rafel

California State University-Maritime Academy

1 Nina Takamoto
1A Vanessa Pena
2 Dalal Muqatash
3 Jen Boswell
4 Ruby Stith
5 Alissa Gunter
6 Corinna Jacobs
7 Hailee Wright
8 Sydnee Mena
9 Sam Ramirez
10 Flora Van Der Schoot
13 Paige Mullaney
14 Sarah Mena
15 Jessica Kanehl
17 Samantha Kruschke
21 Nathalie Calderon
22 Julia Heller
23 Annahid Samijan
24 Taylor Campbell

**California State University
-Fresno**

Roster not available

**Saint Mary's College of
California**

- 1 Sarah Wallace
- 3 Olivia Thomas
- 6 Tegan Stuart
- 7 Jessica Elfin
- 8 MacKenzie Nunes
- 9 Solange Pierre
- 10 Hakailangitau Kailahi
- 11 Onuva Chowdhury
- 12 Joy Balinbin
- 18 Rachel Henley

San Jose State University

Roster not available

**University of California-
Berkeley "A"**

- Alt. Kira Barsten
Alt. Devon Beebe
Alt. Berkely Sakura Cannestra
Alt. Kaitey Caron
Alt. Maddie Chen
Alt. Alex Clark
Alt. Molly DeCastongrene
Alt. Panna Felsen
Alt. Yoselin Galdamez
Alt. Colette Gulick
Alt. Hannah Hill
Alt. Alyssa Hiraoka
Alt. Roaya Janaatipour
Alt. Jenny Lee
Alt. Audrey Light
Alt. Gabrielle Meza
Alt. Mackenzie Myrhum
Alt. Molly Nolan
Alt. Alexa Ocampo
Alt. Teri Oehmke
Alt. Alexa Phillips
Alt. Destiny Ramirez
Alt. Hanna Shah
Alt. Julia Suh
Alt. Cheyenne Stephens
Alt. Ally Volf
Alt. Maxine Weber
Alt. Peitian Xiong

**University of California-
Berkeley "B"**

Roster not available

**University of California-
Davis "A"**

- 1 Kelley Cartwright
- 1A Cassidy Crouch
- 2 Dallyce Marglon
- 3 Marie-Charlotte Popp
- 4 Aria Anne Lindsay
- 5 Julia Kinsolving

- 6 Sofia Caryotakis
- 7 Sydney Preston
- 8 Aleya Spielman
- 9 Lauren Lesyna
- 10 Emily Gould
- 11 Diana Hatamian
- 13 Michaela Tilinghast
- 14 Carmen Steinmeier
- 16 Asha Pluton

**University of California-
Davis "B"**

Roster not available

**University of California-
Santa Cruz "A"**

Roster not available

**University of California-
Santa Cruz "B"**

Roster not available

**SOUTHEAST
DIVISION****Emory University**

- 1 Alison Gartley
- 2 Caroline Wilkinson
- 4 Lucy Baker
- 5 Joan Zhang
- 6 Emily Baker
- 7 Katie Lambert
- 8 Zoe La Soya
- 9 Lauren Treiman
- 10 Shreeja Patel
- 11 Riley Gulbranson
- 12 Leah Scott
- 13 Alex Lara
- 15 Shannon McKinnon
- 16 Caroline Cohen
- 18 Pamela Niditch
- 19 Ana Lee Pokrzywa
- 20 Julia Caldwell
- 21 Maddy Blanchard
- 22 Isabel White
- 24 Val Lew
- 25 Julia Bartol

Florida State University

- 1 Amanda Denkler
- 1A Kearston Williams
- 2 Keri Ciancio
- 3 Madison Richards
- 4 Katelyn Bloodwell
- 5 Anna Pearson
- 6 Alexandra Kata
- 7 Claudia Gabel
- 9 Sarah Ojalvo
- 10 Olivia Leete
- 11 Christy Dever
- 12 Elena Vallata
- 13 Hana Khan

- 14 Jana Stevenson
- 15 Kelsey Lehman
- 16 Mackenzie Mock
- 17 Paloma Schafer
- 18 Teaghan Skulsk
- 19 Jillian Goulden
- 20 Amanda Gibson
- 21 Madeline Hill
- Alt. Eleanor Clark
- Alt. Morgan Gibson
- Alt. Tawni Hatcher
- Alt. Alexandra Holian
- Alt. Celenia Nimmo

**University of Central
Florida "A"**

Roster not available

**University of Central
Florida "B"**

Roster not available

University of Florida "A"

- 1 Sierra Leete
- 2 Hayley Suraci
- 3 Katie VanDeventer
- 4 Cassidy Sizemore
- 6 Marcela Gallardo
- 7 Mariana Lombello
- 8 Jessie Modrak
- 12 Kirsten Chuba
- 13 Jacqueline James
- 14 Ciara Sadaka
- 15 Maria Marquez

University of Florida "B"

- 1 Emily Stevenson
- 1A Shannon Komisarchik
- 2 Liv Friedman
- 3 Megan Cantor
- 4 Emily Owens
- 5 Hannah Zeffren
- 6 Gabriela Gonzalez
- 7 Deanna Choma
- 8 Therese Miller
- 9 Cecilia Lepa
- 10 Madison Toney
- 11 Tiffany Royle
- 12 Kaitlyn Hansen
- 13 Annika Ramnath
- 14 Grace Cope
- 15 Caroline Lane
- 17 Emily Fennel
- 19 Stephanie Weber
- 20 Angela Vazquez
- Alt. Daniela Ortiz

**SOUTHWEST
DIVISION****Arizona State University**

- 1 Dree Kinder

- 1A/3 Molly O'Connell
- 2 Erin Bascom
- 4 Lindsey Greenwood
- 5 Sarah Miller
- 6 Sally Summersgill
- 7 Kerrin Maher
- 8 Jocelyn Kwong
- 9 Brooke Lavelle
- 10 Caroline Paul
- 11 Mary Catherine Driese
- 12 Darian Faulkner
- 13 Sara Klang
- 15 Grace McCollough
- 16 Lindsey Arellano
- 18 Katie Larrea

**San Diego State University
"A"**

- 1 Hailey Westood
- 3 Frannie Kuesis
- 4 Erin Fink
- 5 Taylor Gomes
- 6 Colleen Boensel
- 7 Nicole Ryder
- 8 Kelli Boling
- 9 Marissa Wyan
- 10 Jessica Gonsalves
- 12 Kayla McGowen
- 13 Allie Jackson
- 18 Marissa Vargas
- 21 Brooke Hanners

**San Diego State University
"B"**

- 1 Kody Howard
- 2 Mina Loldj
- 3 Amor Burns
- 4 Kayleigh Heller
- 5 Logan Kim
- 6 Jocelyn Schumacher
- 7 Jennafer Schoonover
- 8 Haley Tweedie
- 9 Brianna Vasquez
- 10 Talia Kieu
- 11 Isabella Noyce
- 12 Melissa Gogin
- 13 Kelly Wizer
- 16 Daniella Talento

University of Arizona

- 1 Natalie Ross
- 1A Julea Lipiz
- 2 Helen Matz
- 3 Lane Breshears
- 4 Chiara Minutello
- 5 Emily English
- 6 Jordana Gotlieb
- 7 Angela Stoebe
- 8 Kimberly Banks
- 9 Brenna Waggy
- 10 Sam Medieta
- 11 Laura Lundsten
- 12 Julie Redford
- 13 Eden Ruimy

- 14 Julia Hillock
- 15 Lucy Nicole-Fylling
- 16 Mandy Conry
- 17 Shaely Jackson
- 18 Andreah Porchis
- 19 Meaghan Lucas
- 20 Emma Bagne

University of California-Irvine

- 1 Genia Nizkorodov
- 1A Olga Shigapova
- 2 Caitlin Regan
- 3 Sara Chavez
- 4 Mikayla Kosmala
- 5 Leslie Fernando
- 7 Olga Shigapova
- 8 Alondra Rosales
- 9 Alex Turcios
- 10 Nika Namy
- 11 Lauren Wertheimer
- 12 Meredith Lightbody
- 16 Gianna Fote

University of California-San Diego

- 1 Alenoush Aslanian
- 1A Jenna Elder
- 1B Amanda Duval
- 2 McKenzie Nelson
- 3 Peyton Ballard
- 4 Katie Archer
- 5 Hannah Caskey
- 6 Natalie Popescu
- 7 Camerin Cunningham

- 8 Cathleen Nguyen
- 9 Jessica Iacovelli
- 10 Clara Woods
- 11 Taylor Arnett
- 12 Natalie Le
- 13 Macey Rafter
- 14 Sandhya Sriram
- 15 Amy Ly
- 16 Jennifer MacAulay
- 17 Kinsey Van Deynze
- 18 Allison Karmer
- 19 Meri Yedigaryan
- 20 Mizeille Avina
- 21 Madison Williams
- Alt. Ashley Calton
- Alt. Jessica Chang
- Alt. Jessica Kwok
- Alt. Sinneva Stenberg

TEXAS DIVISION

Baylor University

Roster not available

Rice University

- 1 Amy Fox
- 2 Ellie Dullea
- 3 Alyssa Mullery
- 4 Emily Dickinson
- 5 Bela Walkin
- 7 Rebecca Chen
- 9 Claire Young
- 10 Ellen McMullen
- 11 Helen Wei
- 12 Sophia Grossweiler

- 17 Meg Brigman
- 18 Haley Kurisky

Texas A&M University "A"

- 1 Samantha Whitehead
- 2 Emma Womersley
- 3 Elizabeth Hunt
- 4 Christina Lewandowski
- 5 Elizabeth Crowling
- 6 Michelle Hubbard
- 7 Linden Overbey
- 8 Alyssa Koerber
- 9 Veronica Hadley
- 10 Sophia Hibbeler
- 11 Audrey McCrary
- 12 Emily Jacob
- 13 Julia Johnson
- 14 Kamryn Pursell

Texas A&M University "B"

- 1 Abi Prewitt-Campbell
- 2 Abbie Maier
- 3 Angela Kelley
- 4 Bella Austin
- 5 Elizabeth Roudbari
- 6 Kaytlin Pitzer
- 7 Bailey Ratner
- 8 Lily Connolly
- 9 Loren Blanco
- 10 Madeline McMillan
- 11 Paige Dusthimer
- 12 Kimbre Watkins
- 13 Rachel Marlow
- 14 Rachel Stroh
- 15 Samantha Hay

Texas Christian University

Roster not available

Texas State University

Roster not available

Texas Tech University

- 1 Sarah Norlin
- 4 Alix Gavin
- 5 Darla Vasquez
- 7 Lauren Wood
- 9 Michaela Williams
- 12 Hadlea Bothe
- 14 Sam Burt
- 15 Madison Worrell

The University of Texas

- 1 Michaela Marshall
- 2 Kiley Thueson
- 3 Rachel Johnson
- 4 Katlin Woodbury
- 5 Katherine Asmis
- 6 Angela Floyd
- 7 Abby Smith
- 8 Beeta Baktash
- 9 Bianca Valdez
- 10 Kendra May
- 11 Alexandria Robinson
- 12 Eleanor Brauchle
- 13 Emily Garza
- 14 Sydney Saenz
- 15 Rasha El-Jaroudi
- 16 Kaylee Tran
- 17 Lauren Essary
- 18 Kayla Wiltz
- 19 Stephanie Reyes

FOX 40: THE OFFICIAL WHISTLE.

Authentic. Original.



OFFICIAL WHISTLES OF REFEREES WORLDWIDE

CLASSIC ECLIPSE • CLASSIC • CLASSIC CMG • SONIK BLAST CMG • MINI CMG • PEARL • CAUL



www.fox40world.com

Fox 40 International Inc. - Worldwide Headquarters

340 Grays Road, Hamilton, ON Canada L8E 2Z2

Tel: 905.561.4040 Fax: 905.578.5646 Email: foxinfo@fox40world.com

Fox 40 U.S.A. Inc. - U.S.A. Head Office

4645 Witmer Industrial Estate, Niagara Falls, NY U.S.A. 14305-1360

Tel: 716.298.1129 Fax: 716.298.1204 Email: foxinfo@fox40world.com



TURBO[®]

EXCLUSIVE
DISTRIBUTOR

kap7waterpolo.com
turbo.us

